

CLOSURE

ANGLEKUT™ | CLOSURE FOAM™



**If you want an easy-order,
superior seal beveled
closure, Anglekut's got
you covered**

What's your angle?

- Order with one simple form
- Quick turnaround
- Wire cut to precisely match panel profile/angle
- True fit, fewer gaps
- Won't bleed or dry out



Why beveled closures? Because a beveled closure's unique design creates a **superior seal** between metal roof panels that stops heavy and damaging water from getting in and around the hips and valleys of the roof.

And because Anglekut™ can be made at any angle, it will **fit any profile** and seal out wind, water, birds, and noise. That makes this product ideal for use in the construction of barns, warehouses, house roofs, and other types of metal roof structures.

Beveled closure designs make a valley or hip application **easy to install**. And you wind up with a seal as air tight as standard 90-degree closure strips.

Anglekut beveled closures are made from crosslink polyethylene foam, the same material as M-Cell closures, which means they'll **last the lifetime of the building**. Because the product **doesn't bleed, dry out, or dissolve with weather and UV exposure**, using 1-1/2" thick foam increases the strength of the beveled closure and ensures a superior seal of the open area.

The dynamic design of these beveled closures makes it an easy replacement for materials like polyurethane strips or caulking.

Think it will be hard to order a beveled closure product? No way. Just fill out

Anglekut **Easy-Order Form** on the back of this sheet. You'll get **quick turnaround, too!**

If you want a truly superior seal beveled closure, there's only one that will make the cut. Anglekut.

ANGLEKUT
One element of the Marco WEATHER-TITE™ SYSTEM



Anglekut™ easy order form

It's fast and easy to order Angle-Kut. Just call **1-800-800-8590** and we'll walk you through each step in minutes!

Anglekut™



Anglekut easy
order form

Date _____ Customer P.O.# _____ Job # _____

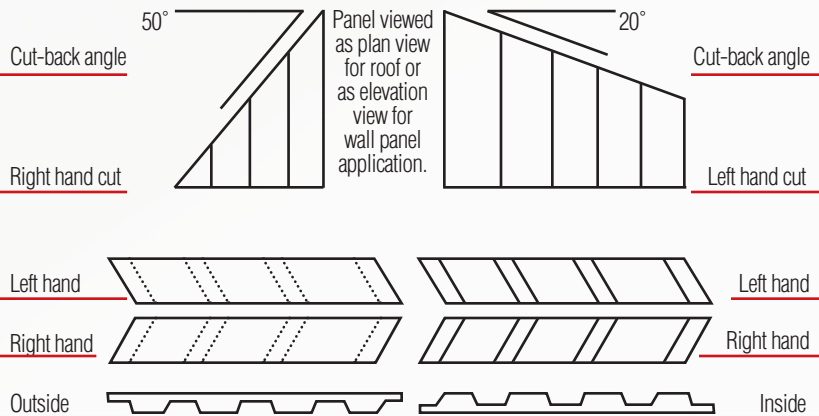
Complete the following information for each separate closure configuration and beveled angle:

1. Panel Name: _____
2. Application: End Wall _____ Hip _____ Valley _____
3. Cut-back Angle: _____
4. Roof Slope (Rise/Run) _____ / _____
5. A. Number of Panels - Inside: Left Hand _____ Right Hand _____
 Outside: Left Hand _____ Right Hand _____

OR

- B. Quantity in Lineal Ft. - Inside: Left Hand _____ Right Hand _____
 Outside: Left Hand _____ Right Hand _____

Key to order entry information:



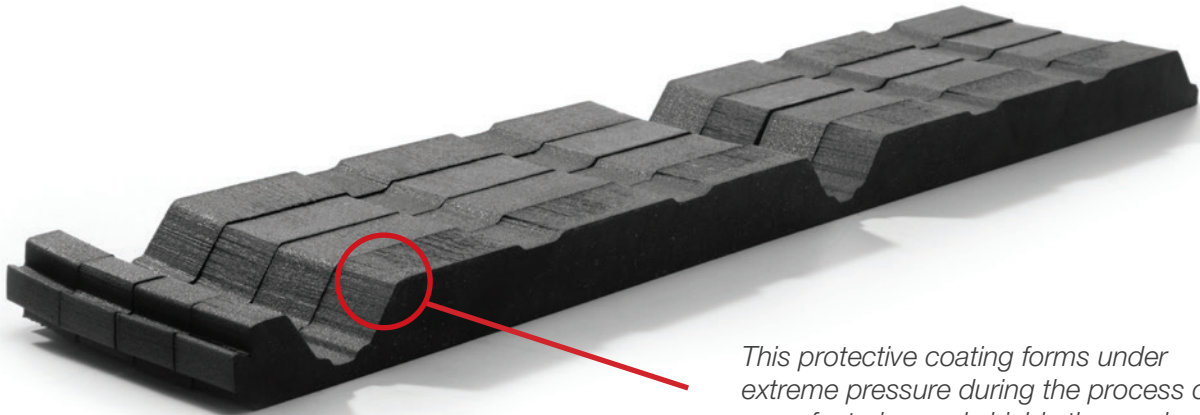
AngleKut represents yet another Marco Industries technological development in bringing you innovative, higher quality, and more economical products for the building industry.

To order: [1.800.800.8590](tel:18008008590) | MarcoIndustries.com | info@MarcoIndustries.com



CLOSURE-FOAM

CUSTOM FIT FOAM CLOSURE SYSTEM



This protective coating forms under extreme pressure during the process of manufacturing and shields the product from harmful UV rays.

Closure-Foam™ comes in more than 450 standard profiles and custom sizes. Designed to stay put, Marco's M63 industrial adhesive eliminates blow away problems with a 1/4" adhesive bead applied to either the flat or the ribbed side of Closure-Foam. It even adheres in subfreezing temperatures and on wet surfaces.

Closure-Foam is most commonly used without dovetails, but is also available with interlocking dovetails

(with or without adhesive) to eliminate gaps and ensure a snug end-to-end fit. They ship pre-scraped leaving you with less job site cleanup.

Closure-Foam is economically priced without sacrificing quality. Marco's crosslink polyethylene foam has a unique coating that gives it better UV resistance and durability than the industry standard. Independent testing confirms Marco's 1.5 density foam provides better UV stability than competitive products with a 2.0 density.

- Full 1/4" bead (once installed) of adhesive applied
- Profiles for every application
- Thickness variety
- Better UV resistance/longer lasting than competition
- No excess scrap for easier cleanup

CLOSURE-FOAM™

- ▶ Value drives everything we do. That's why we developed the Marco Weather-Tite System—a comprehensive line of products that offers easy installation, remarkable building ventilation, lower utility costs, extreme durability, and outstanding warranties for your metal roof and wall systems. Get more quality, more performance and more value ... from Marco.

CLOSURE FOAM™

Specs

Nominal Density-Skin/Skin (BS ISO 7214 1998):
24 kg/m³

Cell Size, Typical Diameter: 0.3 mm

Compression Stress-Strain (BS ISO 7214 1998)

10% compression: 34 kPa

25% compression: 53 kPa

40% compression: 85 kPa

50% compression: 118 kPa

Compression Set: 25% comp, 22hr, 23° C

1/2 hr recovery (25 mm cell-cell): 27% set

24 hr recovery (25 mm cell-cell): 19% set

Tensile Strength (ISO 7214 1998): 320 kPa

Tensile Elongation: 130%

Tear Strength (BS EN ISO 8067 1995): 495 N/m

**Shore Hardness 00 Scale, 10 mm cell/
cell thickness (ISO 868 1985):** 50 00

Recommended Operating Temp. Range:
+100° C/-70° C

**Thermal Conductivity — Mean Temp of 10° C
(ISO 8302 1991):** 0.0392 W/m.K

**Flammability — Automotive (FMVSS.302-
Burn Rate):** Pass 12 mm & thicker <100mm/min

**Flammability — Horizontal Burn Rate
(ISO 7214 1998):** 5 mm thick, 2.1 mm/sec
and 13 mm thick, 1.5 mm/sec

Durometer (50): Shore 00

Water: 5% lbs/ft³

*Specs shown are LD24 value.

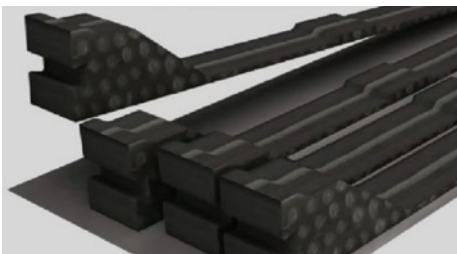


You May Also Need

- ▶ Mastix™ / Anglekut™

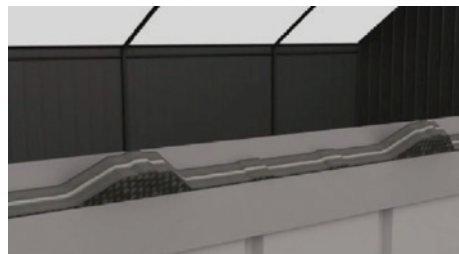
Easy Install

See our installation instructions online at MarcoIndustries.com. Closure-Foam can be installed by a single person in just three easy steps.



Step 1:

Ensure the self-adhesive closure configuration fits the roof panel used.



Step 2:

The inside Closure fits the underside of the panel.



Step 3:

Place the roof panel over pre-cut closure configuration for a snug fit. Attach panel over closure with Marco QuikGrip™ or QuikDrill™ fasteners.



Value through the Roof.

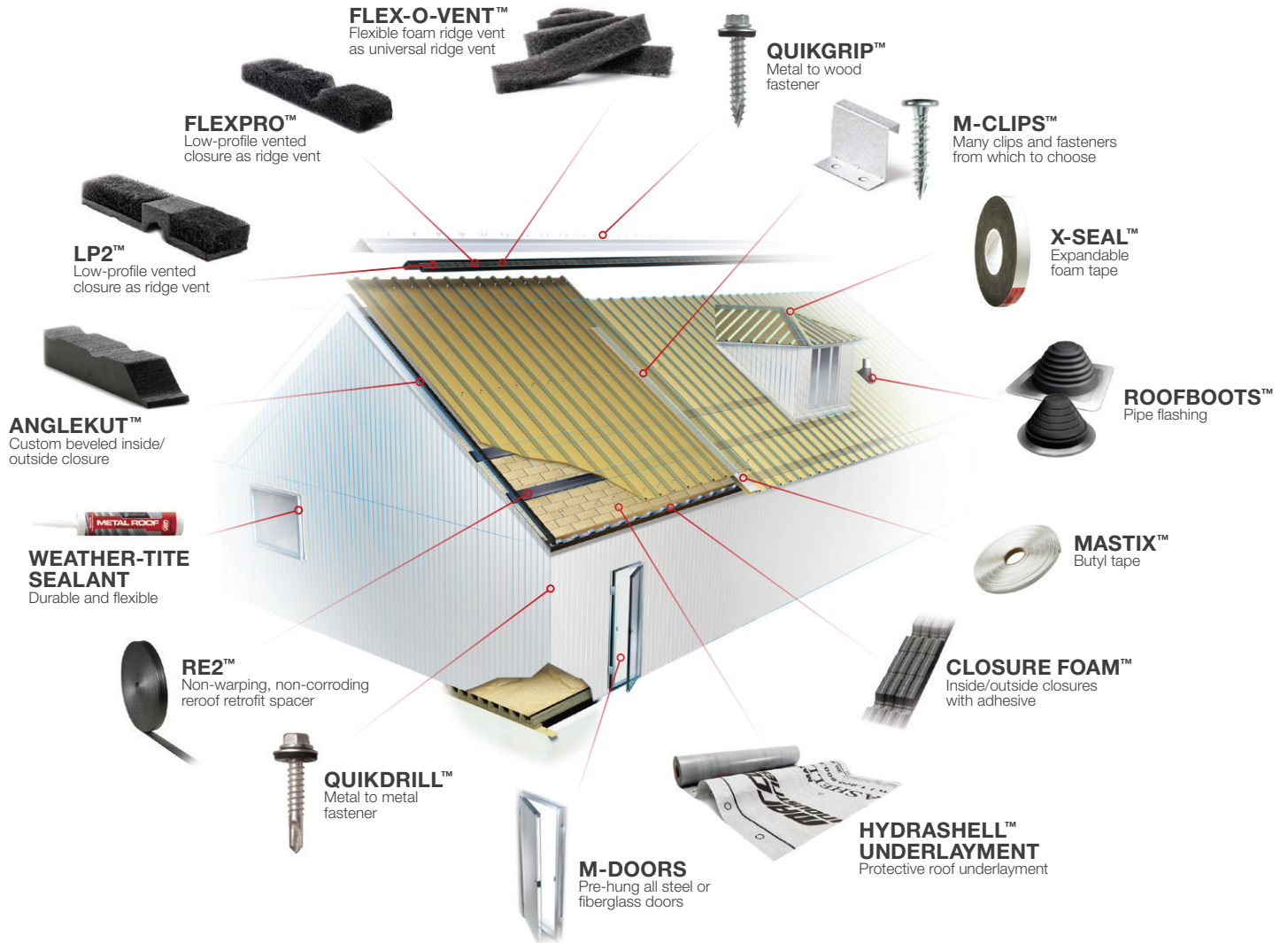
800.800.8590 / MarcoIndustries.com



Marco's Rapid Response™ delivers, faster and easier. Take advantage of free shipping with low minimum orders.

Value Through The Roof. Value drives everything we do. That's why we've delivered industry-leading products for more than twenty years. And that's why we developed the Marco Weather-Tite System — a comprehensive *line* of products that offers easy installation, remarkable building ventilation, lower utility costs, extreme durability, and outstanding warranties for your metal roof and wall systems. If you want to build it right, buy it smart. Get more quality, more performance and more value ... from Marco.

The Marco Weather-Tite™ System



Value through the Roof.

800.800.8590 / MarcoIndustries.com



Marco's Rapid Response™ delivers, faster and easier. Take advantage of free shipping with low minimum orders.