

# PRODUCT CATALOG



Roofing Ventilation & Accessories

# VENTILATION

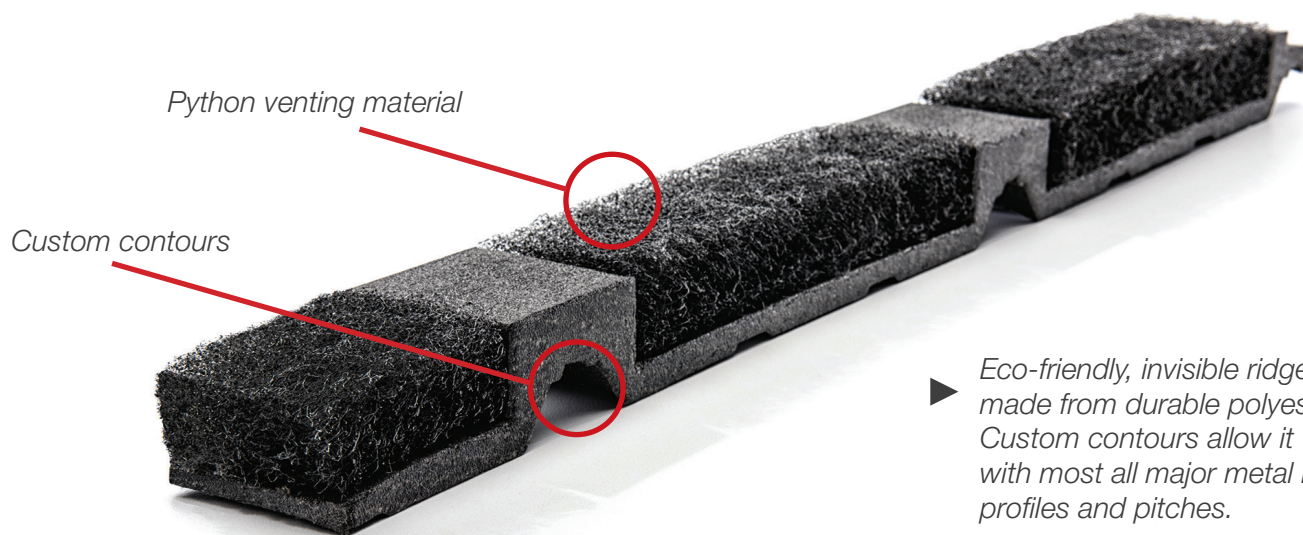


Roofing Ventilation & Accessories



# LP 2

## LOW PROFILE RIDGE VENT



► *Eco-friendly, invisible ridge vent made from durable polyester fiber. Custom contours allow it to fit with most all major metal roofing profiles and pitches.*

**Marco's patented Weather-Tite™ LP2™ Ridge Vent is made from non-fabric-covered Python™ vent material.** This durable, modified polyester is a non-woven, non-wicking, fiber-based matting. Its specially cut contours provide a custom, low-profile fit for any pitch and most major metal roof profiles.

LP2 provides a superior net-free ventilation area that helps keep out moisture, pests and dust. Plus, LP2 can be installed by just one

person in three easy steps. In fact, the screw bed and industrial strength peel-and-stick adhesive pre-applied to LP2 makes this one of the easiest installations imaginable.

Our unique LP2 system improves ventilation, eliminates condensation, and is easy to install...at a cost lower than traditional fans and louvers.

- Reduces utility costs
- One-person installation
- M63 Marco proprietary adhesive, superior hold
- Superior net-free ventilation reduces condensation
- 40-year limited warranty



- Lower, custom-fit profile
- Moisture and pest barrier
- Non-obtrusive appearance

### FLEX-O-VENT

GOOD

Our original, most economical polyester-based ventilation product.

### FLEXPRO

BETTER

New! A profile-cut strip or roll designed to fit most roof panels.

### LP2 RIDGE VENT

BEST

Premier custom-cut vent strip includes Python™ polyester vent material inserts for optimum fit and ventilation.



Roofing Ventilation & Accessories

## The Marco Weather-Tite™ System

Closure

Ventilation

Fasteners

Flashing

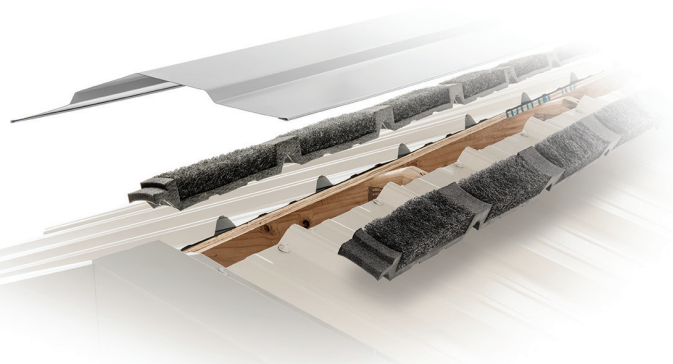
Sealants

Underlayment

Accessories



Value drives everything we do. That's why we developed the Marco Weather-Tite System—a comprehensive line of products that offers easy installation, remarkable building ventilation, lower utility costs, extreme durability, and outstanding warranties. Get more quality, more performance and more value ... from Marco.



## Specs\*

### Overall

**Net Free Area:** Varies with profile based on 17 square inches per linear foot of ventilation material

**Dimensions:** Varies with profile

**Air Permeability:**

>760 cubic feet per minute

**Cold Cracking:** -25° F

**Tear & Tensile Strength:**

Machine 25 ppi / Counter 25 ppi

**Compressive Strength:** 1.8 psi at 75%

**Rain:** No leakage

### Closure Material

**Nominal Density-Skin/Skin (BS ISO 7214 1998):** 24 kg/m<sup>3</sup>

**Compression Stress-Strain (BS ISO 7214 1998)**

**10% compression:** 34 kPa

**25% compression:** 53 kPa

**40% compression:** 85 kPa

**50% compression:** 118 kPa

**Shore Hardness 00 Scale, 10 mm Cell/Cell Thickness (ISO 868 1985):** 50 00

**Thermal Conductivity — Mean Temp of 10° C (ISO 8302 1991):** 0.0392 W/m.K

**Flammability — Automotive (FMVSS.302-Burn Rate):**

Pass 12 mm & thicker <100mm/min

**Flammability — Horizontal Burn Rate (ISO 7214 1998):** 5 mm thick, 2.1 mm/sec and 13 mm thick, 1.5 mm/sec

### Python Material

**Net Free Area:** Varies with profile based on 17 square inches per linear foot of ventilation material

**Dimensions:** Varies with profile

**Cold Cracking:** -25° F

**Compressive Strength:** 1.8 psi at 75%

**Rain:** No leakage

**Air Permeability:** (ASTM D737)

760 cubic feet per minute

**Tear & Tensile Strength:** (Tear: ASTM D1294-86, Tensile: ASTM D2261-83 Machine 25 ppi / Counter 25 ppi)

**Self-Ignition Temperature:** (ASTM D1929) 963° F

## Easy Install



### Step 1:

Allow a 2" slot at the ridge of the metal roof for ventilation. Apply the LP2 Ridge Vent to metal roof by removing the backing paper.



### Step 2:

Align LP2 1/2"-1" up-slope from the edge of the ridge cap. Place onto metal roof with adhesive side down. Be sure LP2 Ridge Vent is in place the first time, the adhesive makes it hard to move.



### Step 3:

To attach consecutive LP2 Vents, butt fit pieces together, sealing with Marco's Weather-Tite Metal Roof Sealant. Place ridge cap over LP2. Secure with Marco QuickGrip/QuickDrill fasteners through metal roof ridge locations, using screw bed locations to avoid penetrating the LP2 insert material.



40  
YEAR  
WARRANTY



Roofing Ventilation & Accessories

800.800.8590 / MarcoIndustries.com



Marco's Rapid Response™ delivers, faster and easier. Take advantage of free shipping with low minimum orders.

\*Effective Net-Free Area determined by profile. Product tested in unassembled state. See full specs at [www.marcoindustries.com](http://www.marcoindustries.com).

©2017 Marco Industries 02/17

# FLEXPRO

## PROFILE-CUT VENTING MATERIAL

Custom contours



*Specially formulated coated polyester has been manufactured from recycled material and is recyclable.*

**Save on energy costs while protecting your building from moisture, pests and dust with FlexPro,™ exclusively from Marco.** Part of the Marco

Weather-Tite™ System and the newest addition to our line of ventilation solutions, FlexPro offers a balanced combination of outstanding features from our superior LP2™ and economical Flex-O-Vent™ products. Made with Marco's unique polyester fiber, FlexPro delivers durable, long-lasting performance.

FlexPro's polyester nonwoven material outlasts and outperforms competitors' polyurethane products. Unlike polyurethanes that absorb moisture, can freeze and block ventilation, FlexPro is made to perform in all seasons and is backed by Marco's 40-year limited product warranty.

- Effective rib-cut profile fits most metal roofs
- High density ensures quick, full material recovery after installation
- Easy, one-person installation

- Eliminates condensation and prevents moisture, pest and dust from entering the structure
- Reduces utility bills through added attic ventilation
- Low profile design offers non-obtrusive appearance
- 2 beads of M63 Marco proprietary adhesive for superior hold
- Available in box or roll quantities

**FLEXPRO™**

### FLEX-O-VENT

GOOD

Our original, most economical polyester-based ventilation product.

### FLEXPRO

BETTER

New! A profile-cut strip or roll designed to fit most roof panels.

### LP2 RIDGE VENT

BEST

Premier custom-cut vent strip includes Python™ polyester vent material inserts for optimum fit and ventilation.



Roofing Ventilation & Accessories



## The Marco Weather-Tite™ System

Closure

Ventilation

Fasteners

Flashing

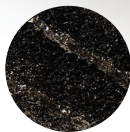
Sealants

Underlayment

Accessories

- Value drives everything we do. That's why we developed the Marco Weather-Tite System—a comprehensive line of products that offers easy installation, remarkable building ventilation, lower utility costs, extreme durability, and outstanding warranties. Get more quality, more performance and more value ... from Marco.

# FLEXPRO™



Marco's proprietary M63 continuous double-bead adhesive is key to quick, easy FlexPro installation.

## Specs

**Net Free Area:** FlexPro Panel Fit - 1-1/8" free-standing product, NFA 26 sq. in.\*

**Available In:** 3' stick, 20' and 50' rolls

**Air Permeability:** >800 cubic feet per minute

**Tear Strength:** 3.5 ppi

**Tensile Strength:** 16 psi – Elongation 175%

**Compressive Strength:** 1.8 psi at 75%

**ASTM Testing:** D1929, D737

\*Effective Net Free Area varies based on product height, panel profile, and installation methods.



**40  
YEAR  
WARRANTY**



## You May Also Need

- Roof Boots™ / Weather-Tite Metal Roof Sealant

## Easy Install

See our installation instructions online at [MarcoIndustries.com](http://MarcoIndustries.com). To install FlexPro, simply peel and stick the product to the metal roof, careful to match the custom-cut contours to roof ridges. Next put the ridge cap in place and fasten down-slope from the FlexPro product (shown below):



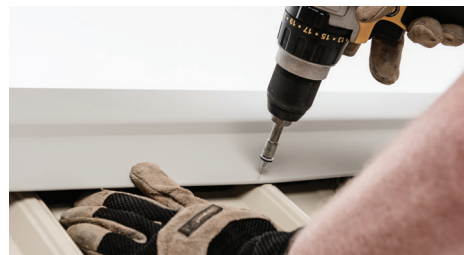
### Step 1:

FlexPro comes in various panel configurations, roll and stick package options. Apply the FlexPro Ridge Vent to metal roof by removing the backing paper.



### Step 2:

Align the FlexPro Ridge Vent 1/2"-1" up-slope from the edge of the ridge cap. Place onto metal roof with adhesive side down. *Note that the adhesive is strong and once put in place it will be hard to move. Be sure the FlexPro Ridge Vent is in place the first time.*



### Step 3:

When attaching consecutive FlexPro Vents, butt fit the pieces together. Marco Weather-Tite Metal Roof Sealant can be used to seal the butt joint. Place ridge cap over FlexPro. Secure in place with Marco QuickGrip/QuickDrill fasteners; fasten through the metal roof ridge locations, avoiding penetrating the FlexPro material, using a min. 3300 rpm screw gun.



Roofing Ventilation & Accessories

800.800.8590 / [MarcoIndustries.com](http://MarcoIndustries.com)

# FLEX-O-VENT

## UNIVERSAL VENTING MATERIAL

*Specially formulated coated polyester has been manufactured from recycled material and is recyclable.*



**Marco's Flex-O-Vent™ Universal Venting Material vents, protects and lasts like no other.**

While polyurethane products constantly expand (as they soak up water) and contract (as they dry out) causing them to disintegrate and fail, Flex-O-Vent offers 40 years of Weather-Tite performance. Its specially formulated polyester, manufactured from recycled material, prevents moisture absorption and

holds together to help keep out pests. Flex-O-Vent is also extremely durable, flame-resistant, clog-resistant, and tear-resistant.

Flex-O-Vent is not only an economical choice, it's a long-term solution that provides plenty of cooling air flow, which is vital to meet building codes, reduce utility costs, and minimize long-term building damage caused by improper ventilation.

- Won't absorb moisture, which can freeze and block all ventilation
- M63 Marco proprietary adhesive for superior hold
- Easy, one-person installation
- 40-year limited warranty
- ASTM testing: D1929, D737
- Available in 10' and 20' rolls and multiple packaging options



➤ **FLEX-O-VENT**  
— GOOD —  
▲

Our original, most economical polyester-based ventilation product.

**FLEXPRO**  
— BETTER —  
▲

New! A profile-cut strip or roll designed to fit most roof panels.

**LP2 RIDGE VENT**  
— BEST —  
▲

Premier custom-cut vent strip includes Python™ polyester vent material inserts for optimum fit and ventilation.



Roofing Ventilation & Accessories

## The Marco Weather-Tite™ System

Closure

Ventilation

Fasteners

Flashing

Sealants

Underlayment

Accessories

- Value drives everything we do. That's why we developed the Marco Weather-Tite System—a comprehensive line of products that offers easy installation, remarkable building ventilation, lower utility costs, extreme durability, and outstanding warranties. Get more quality, more performance and more value ... from Marco.



Marco's proprietary M63 continuous double-bead adhesive is key to quick, easy Flex-O-Vent installation.

## Specs

**Net Free Area:** FOV - 1" free-standing product, NFA 23 sq. in.\*

**1- 1/2" x 3" x 10':** Rib heights up to 1-1/4"

**1- 1/2" x 2" x 10':** Rib heights up to 1-1/4"

**1" x 3" x 10':** Rib heights up to 3/4"

**1" x 2" x 10':** Rib heights up to 3/4"

**Air Permeability:** >760 cubic feet per minute

**Cold Cracking:** -55° C (-130° F)

**Tear Strength:** 3.5 ppi

**Tensile Strength:** 16 psi – Elongation 175%

**Compressive Strength:** 1.8 psi at 75%

**Abrasion:** No Damage

\*Effective Net Free Area varies based on product height, panel profile, and installation methods.



## You May Also Need

- Roof Boots™ / Weather-Tite Metal Roof Sealant

## Easy Install

See our installation instructions online at [MarcoIndustries.com](http://MarcoIndustries.com). With Flex-O-Vent, one size fits most panels.

Installation is a simple three-step process easily handled by one installer. Flex-O-Vent comes in easy-to-handle 10-foot rolls (mirroring most ridge cap lengths) or larger 20-foot rolls if you prefer. It is easily cut with scissors or utility knife and a double bead of M63 adhesive holds Flex-O-Vent securely in place until the ridge cap is installed.



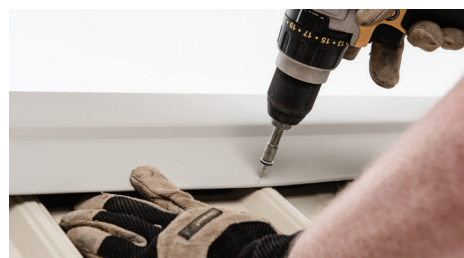
### Step 1:

Make sure panel is free of dust and debris. If not pre-cut, cut 2" slot at ridge. Measure and mark where the ridge cap will sit on the panel.



### Step 2:

Start from the end of the ridge, rolling out Flex-O-Vent along the length of the ridge (both sides), making sure the vent sits "up-slope" from the edge of the ridge cap.



### Step 3:

Apply ridge cap, compressing material between the ridge cap and major rib. Fasten at the major rib using a screw gun set to at least 2700 rpm.



Roofing Ventilation & Accessories

800.800.8590 / [MarcoIndustries.com](http://MarcoIndustries.com)



Marco's Rapid Response™ delivers, faster and easier. Take advantage of free shipping with low minimum orders.



# PYTHON WEATHER-TITE™ ROLLED RIDGE VENT



*Non-Woven Material  
Providing Superior  
Net Free Venting Area*

*Available in 20' and  
50' roll lengths*

Marco's Weather-Tite™ Rolled Ridge Vent is made from high performing non-wicking modified polyester material.

Marco's recycled polyester shingle-over ridge exhaust vent is designed to keep attics cool and dry in all seasons. Marco™ Rolled Ridge Vent is economical, quick to install and its non-wicking performance will keep out insects, dust and moisture, extending the life of your roof. Marco™ is also backed by a limited lifetime warranty.

- ▶ **Installer Friendly** - its light, flexible and comes in 20' and 50' rolls.
- ▶ **No Waste** - Cut where you want and use every piece.
- ▶ **Durable - Resists** damage from ice, hail, and other weather. No warping and less loosening problems.
- ▶ **Effectively Blocks** - Insects, bats, birds, and wind borne debris, dust and dirt.
- ▶ **High Performance** - No clogs, deterioration, or dirt and snow trapping.

Attics need to breathe to keep cool and dry with proper ventilation.

- ▶ Reduces utility costs.
- ▶ Prevents mold and mildew.
- ▶ Extends shingle and roof deck life
- ▶ Eliminates damaging ice dams in winter.
- ▶ Reduces air conditioning maintenance costs.



## The Marco Weather-Tite™ System

Closure

Ventilation

Fasteners

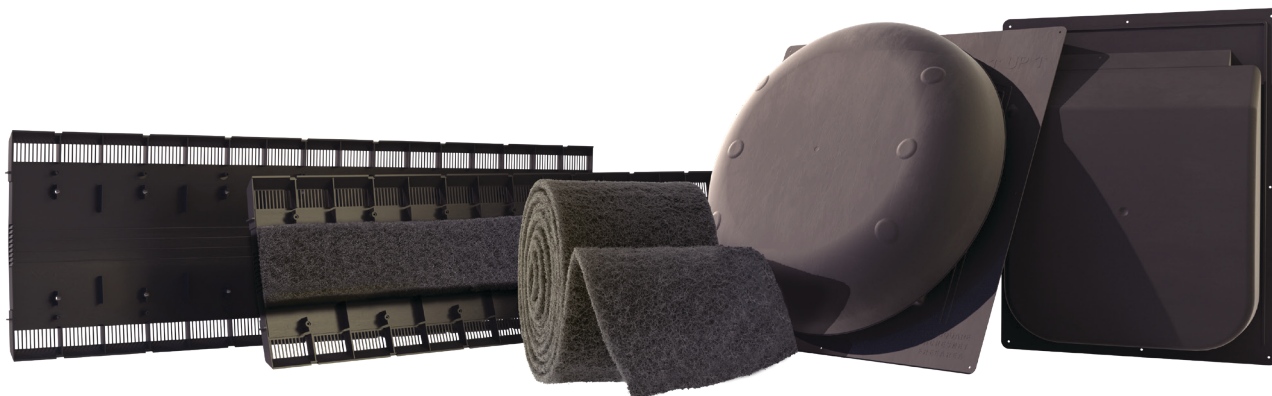
Flashing

Sealants

Underlayment

Accessories

- Value drives everything we do. That's why we developed our Steep Slope Ventilation Division. This comprehensive line of products offer easy installation, remarkable building ventilation, lower utility costs, extended shingle and roof deck life, extreme durability, and outstanding warranties. Get more quality, more performance, and more value... Marco Industries.™



### Specs

**Net Free Venting Area:** ¾" thick: 17.5 sq. in. per lineal foot of ridge

**Material:** Highly durable and high performing non-woven, non-wicking modified polyester. Made with over 90% recycled plastic and 30% post-consumer content

**Codes & Standards:** FBC and CSA approvals

**Color:** Dark Grey

**Nails:** Coil of 1¾" Nails

**Roof Pitch:** Conforms to any pitch from 2/12 to 20/12

**Pack Unit of Measurement:** 1 per bag

**Ridge Vent Roll Sizes:** ¾" x 8" x 20', ¾" x 10.5" x 20', ¾" x 11.75" x 20', ¾" x 10.5" x 50', ¾" x 11.75" x 50'

**Air Permeability:** (ASTM D737) 760 cubic/minute

**Tear Strength:** ASTM D1294-86

**Tensile Strength:** ASTM D2261-83

Machine 25 ppi / Counter 25 ppi

**Cold Crack Resistance:** (GLIT C115) -25°F

**Snow Infiltration:** (CRL 5704) Zero

**Self-Ignition Temperature:** (ASTM D1929) 963°F

**Weathering:** UV stable, polyester composite

**Maintenance:** Properly installed, maintenance free



### Easy Install

See our installation online at [marcoindustries.com](http://marcoindustries.com)

1. Use on a minimum 3/8" (10 mm) plywood or OSB decking.
2. Cut a 2" (51 mm) slot along the ridge, 1" (25.4 mm) on each side. Leave uncut (closed) sheathing area of 6" (152 mm) at each end of the ridge. Cut through sheathing only, avoiding roof trusses. (In houses with a ridge board, cut 3½" (89 mm) slot, 1¾" on each side.
3. Where short ridges (dormers, ridge intersections) are used, mark and cut the slot and make sure that the end of the opening stops at least 12" (305 mm) from the ridge intersection.
4. Uncoil Python Single Layer Vent along the entire length of the ridge, covering uncut 6" (152mm) sheathing area on both ends. Shorter lengths can be joined by caulking and butting the end.
5. Install cap shingles directly over Python Single Layer Vent. Use included 1¾" (44.4mm) coil nails. Python Single Layer Vent has a ¾" (19.1mm) nominal thickness. Be sure not to crush or compress the vent during installation.



Roofing Ventilation & Accessories

800.800.8590 / [MarcoIndustries.com](http://MarcoIndustries.com)



Marco's Rapid Response™ delivers, faster and easier. Take advantage of free shipping with low minimum orders.



# SHINGLE GOOSENECK VENT



**Marco's Shingle Gooseneck Vent is made from durable 26-gauge galvalume steel.**

The Shingle Gooseneck Vent is the only vent of its kind to pass wind-driven rain testing. It's made from durable 26-gauge galvalume steel and its low vent profile and fully closed design can help reduce wind uplift. Shingle Gooseneck Vent has a round design that promotes superior airflow and makes it ideal for kitchen or bathroom exhausts.\*

- ▶ Quiet - no noisy damper opening and closing
- ▶ 99.9% leak proof
- ▶ Suitable for any roof pitch from 3/12 to 12/12
- ▶ Mini louvers in vent hood block wind driven rain
- ▶ Interior louver panel captures any moisture directing it to the vent pan away from the attic
- ▶ Internal baffle offers a third line of defense against wind-driven rain
- ▶ Keeps insects and critters out
- ▶ Meets Energy Star color requirements
- ▶ High Quality & Durability - Reduces customer call-backs

*\*Not to be used as a laundry vent.*

The Marco  
Weather-Tite™  
System

Closure

Ventilation

Fasteners

Flashing

Sealants

Underlayment

Accessories

- Value drives everything we do. That's why we developed our Steep Slope Ventilation Division. This comprehensive line of products offer easy installation, remarkable building ventilation, lower utility costs, extended shingle and roof deck life, extreme durability, and outstanding warranties. Get more quality, more performance, and more value ... Marco Industries.™

### Specs

**Dimensions:** Width 19-3/16" x Height 7 1/2"

**Materials:** 26 - gauge galvalume

**Codes & Standards:** FL Building Code,

**Color:** Black, Weatherwood, Mil

**Roof Pitch:** Conforms to any pitch from 3/12

**Patents:** Pending

**Sizes:** 4", 6" and 10"

**Vent Hood:** Mni louvers in lower portion of hood block water

**Interior Louver Panel:** Act as second water barrier

**Internal Baffle:** Placed at the top of the vent pan, the internal baffle is the third line of defense against water intrusion



Proudly Made in North America



### Easy Install

See our installation online at [marcoindustries.com](http://marcoindustries.com)

1. Select required vent size; 4" Vent, 6" Vent, or 10" Vent
2. When installing vents on an existing tile roof: remove tiles immediately around sides and top of opening to provide space to install vent as per instructions below.
3. Position vent over opening in deck.
4. Fasten side and top flanges securely with minimum 1 1/4" standard roofing nails spaced 4" on center and 1 1/2" from outer edge of flange.
5. Seal flanges to sub-roof membrane as per substrate manufacturer recommendations.
6. Cut tile to fit around vent and install per tile manufacturer recommendations.

Tip: Pre-cut shingles to fit prior to applying roof cement. Then remove cut pieces, apply roof cement and install shingles per above.



Roofing Ventilation & Accessories

800.800.8590 / [MarcoIndustries.com](http://MarcoIndustries.com)



Marco's Rapid Response™ delivers, faster and easier. Take advantage of free shipping with low minimum orders.

# SHINGLE OFF-RIDGE VENT



**Marco's Shingle Off-Ridge Vent is made from durable 26-gage galvalume steel.** The Shingle Off-Ridge Vent contains perforated panel technology which allows it to outperform other off-ridge vents in wind driven rain tests. It is guaranteed to have zero water entry at 110 MPH wind-driven rain. Marco's Shingle Off-Ridge Vent has a unique, completely enclosed design that, along with its low vent profile, helps reduce wind uplift and eliminates water infiltration.

- ▶ Innovative fully enclosed design
- ▶ Does not allow water infiltration
- ▶ Low vent height makes it less noticeable when installed
- ▶ No additional external baffle is needed in the front of the vent, saving time and money
- ▶ Suitable for any pitch from 3/12 to 12/12
- ▶ 25 square inches of Net Free Venting Area per lineal foot - 100 square inches of Net Free Venting Area per 4' unit
- ▶ Keeps insects and critters out
- ▶ Meets Energy Star color requirements
- ▶ High Quality & Durability - Reduces customer call-backs

## **Attics need to breathe to keep cool and dry with proper ventilation.**

- ▶ Reduces air conditioning maintenance costs
- ▶ Prevents mold and mildew
- ▶ Prevents wood rot which extends shingle and roof deck life
- ▶ Reduces utility costs

## The Marco Weather-Tite™ System

Closure

Ventilation

Fasteners

Flashing

Sealants

Underlayment

Accessories

- Value drives everything we do. That's why we developed our Steep Slope Ventilation Division. This comprehensive line of products offer easy installation, remarkable building ventilation, lower utility costs, extended shingle and roof deck life, extreme durability, and outstanding warranties. Get more quality, more performance, and more value... Marco Industries.™

### Specs

**Net Free Area:** 4' at 100 Sq. Inches of Net Free Area

**Material:** 26 - Gauge Galvalume

**Codes & Standards:** FL Building Code

**Dimensions:** Width 23½" x Height 3¼"

**Nominal Lengths:** 4'

**Color:** Mill and Colors on request

**Screws:** 1¾ Wood Type for Bottom Flange

**Roof Pitch:** Conforms to any pitch from 3/12 to 12/12

**Patents:** Pending

**Vent Hood:** Mini louvers in hood blocks water

**Interior Louver Panel:** Mini louvers in opposite direction to louvers on lower portion of hood as second water barrier

**Internal Baffle:** Placed at the top of the vent pan, the internal baffle is the third line of defense against water intrusion



Proudly Made in North America



### Easy Install

See our installation online at [marcoindustries.com](http://marcoindustries.com)

1. Space vent openings evenly across ridge. The opening size should be a minimum of a 2½" by 46" cut between 2 sets of rafters. Note: Do not cut into rafters
2. If shingle have previously been installed on the roof, remove the tiles around sides and top of opening to provide space to install vent as per instructions.
3. Shingle courses should be installed close to deck opening so that the front flange of the vent completely covers unexposed section of shingle.
4. Position the vent to cover the last course of shingles, leaving the proper exposed section of shingle at the side flanges of vent. Center vent over the opening of the deck. Apply approved sealant under front flange of vent.
5. Fasten side and top flanges securely with minimum 1¼" standard roofing nails. Space nails approximately 4" on the center and approximately 1½" from outer edge of flange.
6. Secure the bottom flange with provided wood screws. Space screws evenly no more than 18" apart. A 4 ft. vent will require a minimum of 2 screws.
7. Apply roof cement on side and top flanges. Completely cover flanges 2" beyond flange onto underlayment with ¼" thick bed of plastic roof cement.
8. Cut shingles to fit so flanges are completely covered. Press shingles into place to ensure they are bonded to the cement. Fasten shingles with nails per shingle manufacturer's instructions.



Roofing Ventilation & Accessories

800.800.8590 / [MarcoIndustries.com](http://MarcoIndustries.com)

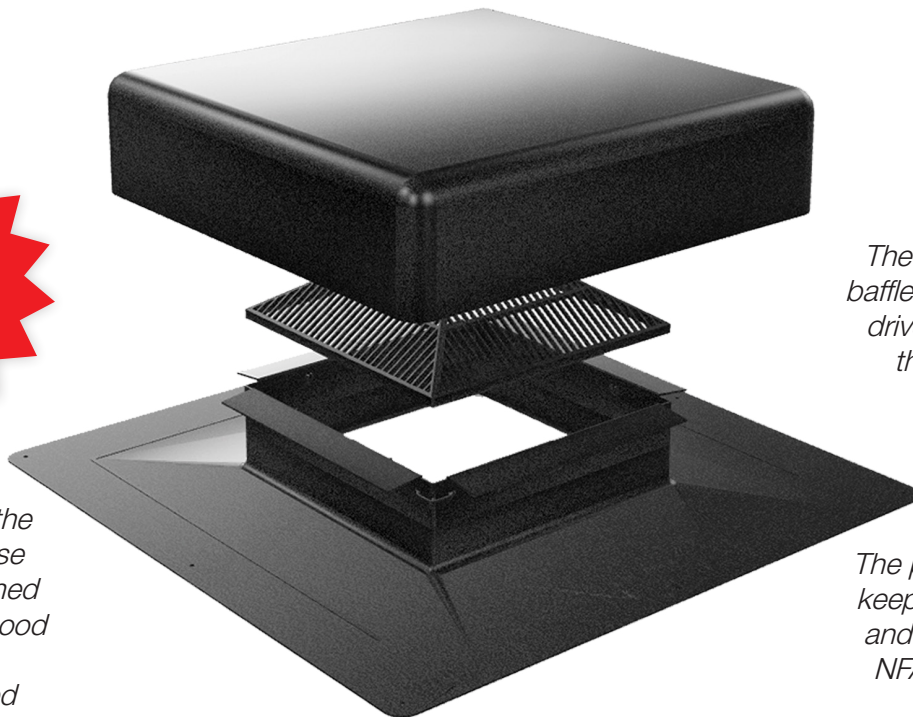


Marco's Rapid Response™ delivers, faster and easier. Take advantage of free shipping with low minimum orders.



# 50 SQUARE VENT

**IMPEDES  
WIND, RAIN,  
INSECTS,  
VERMIN &  
DEBRIS**



*A baffle around the throat of the base of the vent is turned down when the hood and base are snap assembled*

*The unique turned down baffle feature impedes wind driven rain from entering the attic by creating wind turbulence*

*The pyramid grill at the top keeps out insects, vermin, and debris while allowing NFA 50 Sq. In. per vent*

**Marco's 50 Square Vent is truly innovative with living hinge baffle technology.**

- ▶ The only static vent on the market with a turned down baffle. This creates wind turbulence and keeps wind-driven rain out of the attic.
- ▶ The turned down baffle is made possible with living hinge technology, meaning the baffle is molded and then folded into place during vent assembly.
- ▶ The pyramid grill keeps out unwanted critters and debris.
- ▶ Can be installed over standard-sized holes on re-roofs.
- ▶ The low profile makes it more discreet and enhances curb appeal.

## **Specs**

**Net Free Venting Area:** 50 square inches per vent

**Material:** No-break polypropylene

**Codes & Standards:** TDI, FL Building Code, CSA, Miami Dade

**Colors:** Black, brown, weatherwood

**Roof Pitch:** Conforms to any pitch from 3/12 to 12/12

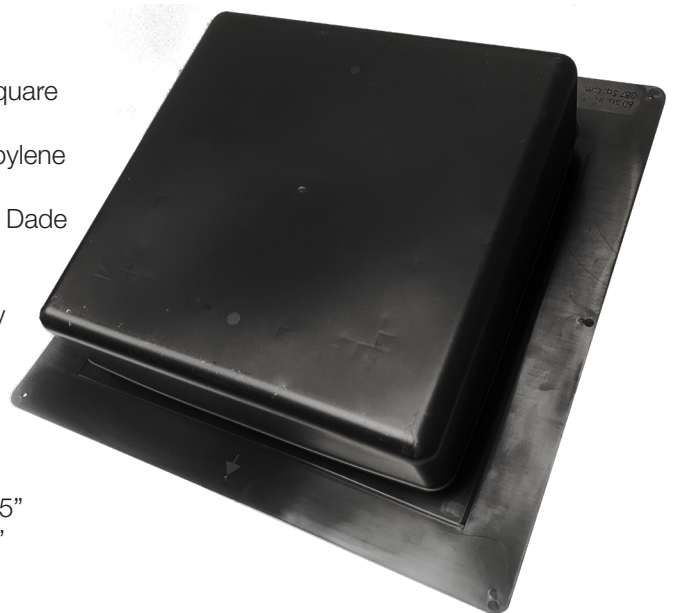
**Patents:** Pending

## **Dimensions & Packaging**

**Height:** 4.45 inches

**Flashing Size:** 17.75" x 17.75"

**Hood Dimensions:** 13" x 13"



Roofing Ventilation & Accessories

- Value drives everything we do. That's why we developed our Steep Slope Ventilation Division. This comprehensive line of products offer easy installation, remarkable building ventilation, lower utility costs, extended shingle and roof deck life, extreme durability, and outstanding warranties. Get more quality, more performance, and more value...Marco Industries™



## Easy Install

1. Locate the roof vents toward the rear or side of the house spaced evenly over the width of the roof.
2. Mark the location of all roof vents before cutting holes. Cut the hole in the roof deck to closely match the hole in the vent. Center the holes between the rafters down two feet (24") from the peak of the roof. When installed as an intake vent, position vent at two feet (24") from the eave or edge of the roof. Ensure that attic insulation does not block intake vent.
3. Install shingles until the bottom of the hole is covered. Cut the excess shingles away. Apply an approved sealant around the edge of the hole.
4. The top of the vent has an arrow at the top of the flashing to install facing the ridge. Ensure that the vents are installed to the up-arrow position.
5. Secure the vent base with a minimum of 6 galvanized nails. Nails should be a minimum of 1 1/4" long and should penetrate the vent, shingle, and decking. Secure a nail in each corner of the vent flashing and along the middle of each side of the vent.
6. For proper sealing, use a plastic-friendly roofing sealant. All nails should receive a dab of sealant.
7. Install shingles around the vent ensuring that the shingles butt up against the throat of the vent.
8. Pre-cut the top shingle to fit around the top side of the vent throat and nail in place. Install shingles as normal.



Roofing Ventilation & Accessories

800.800.8590 / [MarcoIndustries.com](http://MarcoIndustries.com)



Marco's Rapid Response™ delivers, faster and easier. Take advantage of free shipping with low minimum orders.

# WEATHER-TITE 60 SQUARE VENT

## INTAKE & EXHAUST DUAL-USE VENT

*A baffle around the throat of the base of the vent is turned down when the hood and base are snap assembled*



*The unique turned down baffle feature impedes wind driven rain from entering the attic by creating wind turbulence keeping your attic dry*

*The Weather-Tite non-woven insert keeps out insects, vermin, snow, rain, and debris while allowing NFA 60 Sq. In. per vent*

Marco's 60 Square vent is an innovative dual-use vent that can be used as both an intake and an exhaust vent.

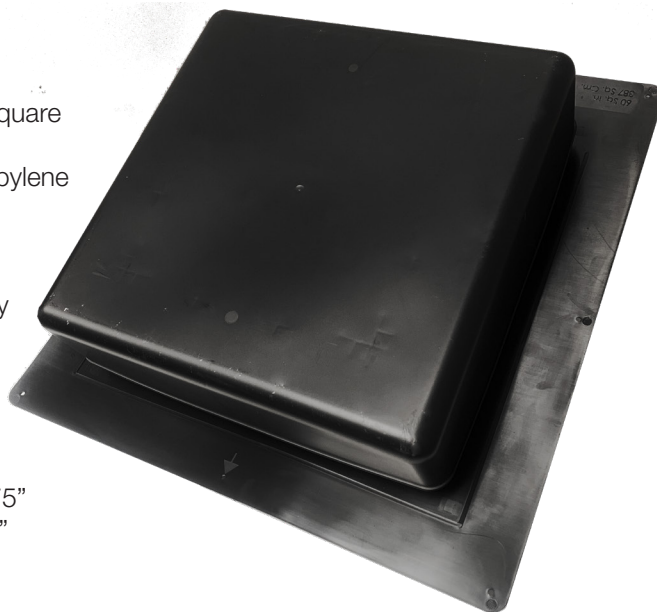
- ▶ The only static vent on the market with a turned down baffle. This creates wind turbulence and keeps wind-driven rain out of the attic.
- ▶ The turned down baffle is made possible with living hinge technology, meaning the baffle is molded and then folded into place during vent assembly.
- ▶ Non-woven Weather-Tite™ baffle blocks moisture, insects & debris from entering the attic.
- ▶ Can be installed over standard-sized holes on re-roofs.
- ▶ The low profile makes it more discreet and enhances curb appeal.

### Specs

Net Free Venting Area: 60 square inches per vent  
Material: No-break polypropylene  
Codes & Standards: CSA,  
Colors: Black, brown, weatherwood  
Roof Pitch: Conforms to any pitch from 3/12 to 12/12  
Patents: Pending

### Dimensions & Packaging

Height: 4.45 inches  
Flashing Size: 17.75" x 17.75"  
Hood Dimensions: 13" x 13"



- Value drives everything we do. That's why we developed our Steep Slope Ventilation Division. This comprehensive line of products offer easy installation, remarkable building ventilation, lower utility costs, extended shingle and roof deck life, extreme durability, and outstanding warranties. Get more quality, more performance, and more value ...Marco Industries™



## Easy Install

1. Locate the roof vents toward the rear or side of the house spaced evenly over the width of the roof.
2. Mark the location of all roof vents before cutting holes. Cut the hole in the roof deck to closely match the hole in the vent. Center the holes between the rafters down two feet (24") from the peak of the roof. When installed as an intake vent, position vent at two feet (24") from the eave or edge of the roof. Ensure that attic insulation does not block intake vent.
3. Install shingles until the bottom of the hole is covered. Cut the excess shingles away. Apply an approved sealant around the edge of the hole.
4. The top of the vent has an arrow at the top of the flashing to install facing the ridge. Ensure that the vents are installed to the up-arrow position.
5. Secure the vent base with a minimum of 6 galvanized nails. Nails should be a minimum of 1 1/4" long and should penetrate the vent, shingle, and decking. Secure a nail in each corner of the vent flashing and along the middle of each side of the vent.
6. For proper sealing, use a plastic-friendly roofing sealant. All nails should receive a dab of sealant.
7. Install shingles around the vent ensuring that the shingles butt up against the throat of the vent.
8. Pre-cut the top shingle to fit around the top side of the vent throat and nail in place. Install shingles as normal.



Roofing Ventilation & Accessories

800.800.8590 / MarcoIndustries.com

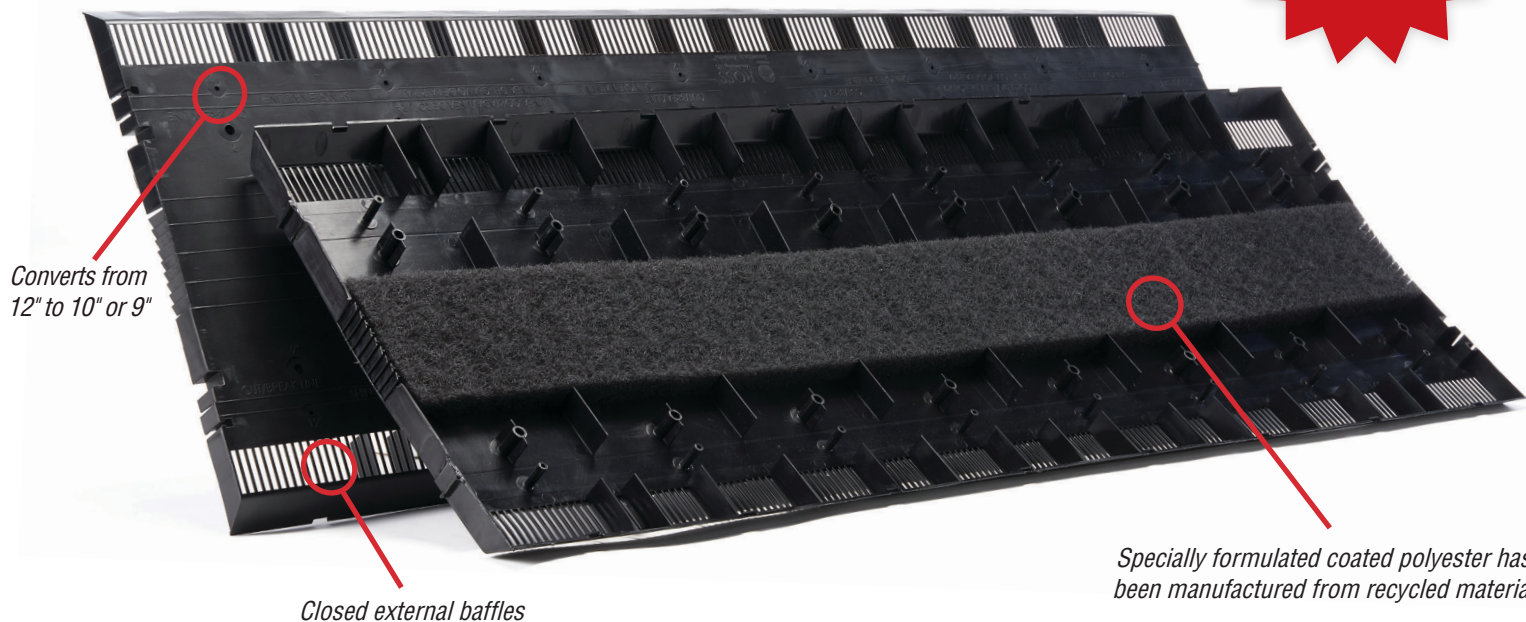


Marco's Rapid Response™ delivers, faster and easier. Take advantage of free shipping with low minimum orders.



# WEATHER-TITE™ FLEXFIT™ 3-IN-1 RIDGE VENT

OFFERING  
SUPERIOR ATTIC  
VENTILATION FOR  
HOMEOWNERS



Python's patented Weather-Tite™ FlexFit™ 3-IN-1 Ridge Vent is made from no-break polypropylene material.

- ▶ Converts from 12" to 10" or 9" ridge vent by simply scoring the groove on the top of the vent.
- ▶ Built-in self-closing end caps, no additional parts or labor required.
- ▶ Closed external baffles make it less likely to collect debris resulting in diminished airflow.
- ▶ Suitable for any pitch from 2/12 to 12/12.
- ▶ 84 Square Inches of Net Free Venting Area per piece.

Python's unique Weather-Tite™ FlexFit™ Ridge Vent features a non-wicking modified polyester weather barrier providing a superior net-free

ventilation area while blocking out moisture, pests, and dust. The durable non-woven material is attached at the underside of the ridge vent and will not clog like traditional fiberglass air conditioning type vent filters. Allowing zero snow penetration.

- ▶ Strong and durable - green product.
- ▶ No clogs - keeping insects, dust, and moisture out.

**Attics need to breathe to keep cool and dry with proper ventilation.**

- ▶ Reduces utility costs.
- ▶ Prevents mold and mildew.
- ▶ Extends shingle and roof deck life.
- ▶ Eliminates damaging ice dams in winter.
- ▶ Reduces air conditioning maintenance costs.

## Weather-Tite™ FlexFit™ 3-IN-1 Ridge Vent

BEST

Most innovative field adjustable Ridge Vent WITH advanced non-clogging weather barrier.

## FlexFit™ 3-In-1 Ridge Vent

BETTER

Most innovative field adjustable Ridge Vent on the market.



Roofing Ventilation & Accessories

## The Marco Weather-Tite™ System

Closure

Ventilation

Fasteners

Flashing

Sealants

Underlayment

Accessories

- Value drives everything we do. That's why we developed our Steep Slope Ventilation Division. This comprehensive line of products offer easy installation, remarkable building ventilation, lower utility costs, extended shingle and roof deck life, extreme durability, and outstanding warranties. Get more quality, more performance, and more value... Marco Industries.™

**Net Free Venting Area:** 84 Square Inches of NFVA

**Dimensions:** Width 15-1/2" x Length 48"

**Materials:** No-break polypropylene and non-wicking modified polyester material

**Codes & Standards:** TDI, FL Building Code, CSA

**Color:** Black

**Nails:** Bag of 30 - 3" Nails

**Roof Pitch:** Conforms to any pitch from 2/12 to 12/12

**Patents:** US Pat No. 7,662,037, US Pat No. 9,175,480, US Pat No. D694,394, Canada Pat No. 2,776,653

**Shingle Cap Sizes:** Convert from a standard 12" to 10" or 9" ridge vent

**Pack Unit of Measurement:** 10 per carton

**Construction Details:** Closed external baffles with self closing end caps

**Installer Detail:** Shingle nail lines for easy installation

**Nail Holes:** Reinforced to prevent deformation and crushing

**Approvals:** FBC FL38704, TDI RV-125



## Easy Install

See our installation online at [marcoindustries.com](http://marcoindustries.com)

1. Using a chalk line, mark 1" on both sides of the ridge (1" beyond ridge pole) as a guide for cutting a slot in the decking.
2. Cut a slot in the roof ridge using a circular saw with the blade set at a depth to cut through the roof decking only- avoid cutting trusses and rafters.
3. Center the Python™ 3-IN-1 FlexFit™ Ridge Vent over the slot that has been cut in the ridge, ensuring that the Ridge Vent support pegs sit flat on the roof. To ensure proper alignment along the ridge, run a chalk line down both sides of the ridge.
4. Using roofing nails provided, install the vent starting from the outer edge moving inward. Properly secure by using the 12" nail holes.
5. As you install more pieces of the Ridge Vent, ensure that each piece is joined together using the male/female connectors.
6. Cut the final piece to a length long enough so that it is flush with the edge of the roof. Ensure that the self-closed end cap is facing out to prevent weather infiltration. Interlocking feature will not be used on the final piece.
7. Install the cap shingles using the nails provided in the "shingle nail line" area for cap shingle installation as indicated on the Python™ 3-IN-1 FlexFit™ Ridge Vent. Visit [MarcoIndustries.com](http://MarcoIndustries.com) for 10" and 9" Cap Shingle Installation.



Roofing Ventilation & Accessories

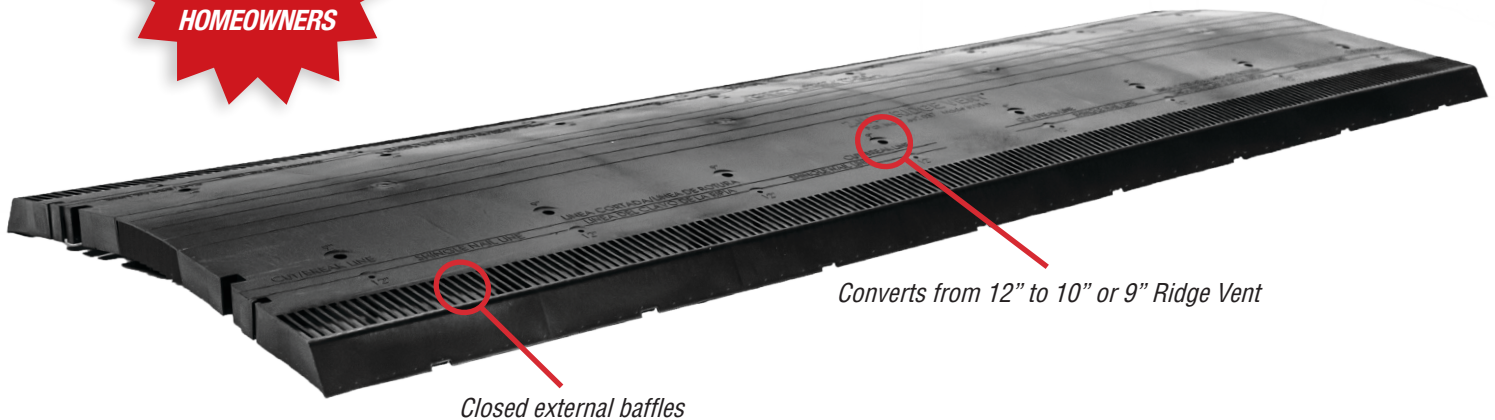
800.800.8590 / [MarcoIndustries.com](http://MarcoIndustries.com)



Marco's Rapid Response™ delivers, faster and easier. Take advantage of free shipping with low minimum orders.

# FLEXFIT™ 3-IN-1 RIDGE VENT

**OFFERING  
SUPERIOR ATTIC  
VENTILATION FOR  
HOMEOWNERS**



Marco's patented FlexFit™ 3-IN-1 Ridge Vent is made from no-break polypropylene material.

- ▶ Converts from 12" to 10" or 9" ridge vent by simply scoring the groove on the top of the vent.
- ▶ Built-in self-closing end caps, no additional parts or labor required.
- ▶ Closed external baffles make it less likely to collect debris resulting in diminished airflow.
- ▶ Suitable for any pitch from 2/12 to 12/12.

- ▶ 84 Square Inches of Net Free Venting Area per piece.
- ▶ Includes 30 - 3" roofing nails attached to each piece for installation.

**Attics need to breathe to keep cool and dry with proper ventilation.**

- ▶ Reduces utility costs.
- ▶ Prevents mold and mildew.
- ▶ Extends shingle and roof deck life.
- ▶ Eliminates damaging ice dams in winter.

## Weather-Tite™ FlexFit™ 3-IN-1 Ridge Vent

BEST

Most innovative field adjustable Ridge Vent WITH advanced non-clogging weather barrier.

## FlexFit™ 3-In-1 Ridge Vent

BETTER

Most innovative field adjustable Ridge Vent on the market.

## The Marco Weather-Tite™ System

Closure

Ventilation

Fasteners

Flashing

Sealants

Underlayment

Accessories

- Value drives everything we do. That's why we developed our Steep Slope Ventilation Division. This comprehensive line of products offer easy installation, remarkable building ventilation, lower utility costs, extended shingle and roof deck life, extreme durability, and outstanding warranties. Get more quality, more performance, and more value... Marco Industries.™

**Net Free Venting Area:** 84 Square Inches of NFVA

**Dimensions:** Width 15-1/2" x Length 48"

**Materials:** No-break polypropylene and non-wicking modified polyester material

**Codes & Standards:** TDI, FL Building Code, CSA

**Color:** Black

**Nails:** Bag of 30 - 3" Nails

**Roof Pitch:** Conforms to any pitch from 2/12 to 12/12

**Patents:** US Pat No. 7,662,037, US Pat No. 9,175,480, US Pat No. D694,394, Canada Pat No. 2,776,653

**Shingle Cap Sizes:** Convert from a standard 12" to 10" or 9" ridge vent

**Pack Unit of Measurement:** 10 per carton

**Construction Details:** Closed external baffles with self closing end caps

**Intaller Detail:** Shingle nail lines for easy installation

**Nail Holes:** Reinforced to prevent deformation and crushing

**Approvals:** FBC FL38704, TDI RV-125



## Easy Install

See our installation online at [marcoindustries.com](http://marcoindustries.com)

1. Using a chalk line, mark 1" on both sides of the ridge (1" beyond ridge pole) as a guide for cutting a slot in the decking.
2. Cut a slot in the roof ridge using a circular saw with the blade set at a depth to cut through the roof decking only- avoid cutting trusses and rafters.
3. Center the FlexFit™ 3-IN-1 Ridge Vent over the slot that has been cut in the ridge, ensuring that the Ridge Vent support pegs sit flat on the roof. To ensure proper alignment along the ridge, run a chalk line down both sides of the ridge.
4. Using roofing nails provided, install the vent starting from the outer edge moving inward. Properly secure by using the 12" nail holes.
5. As you install more pieces of the Ridge Vent, ensure that each piece is joined together using the male/female connectors.
6. Cut the final piece to a length long enough so that it is flush with the edge of the roof. Ensure that the self-closed end cap is facing out to prevent weather infiltration. Interlocking feature will not be used on the final piece.
7. Install the cap shingles using the nails provided in the "shingle nail line" area for cap shingle installation as indicated on the FlexFit™ 3-IN-1 Ridge Vent. Visit [MarcoIndustries.com](http://MarcoIndustries.com) for 10" and 9" Cap Shingle Installation.



Roofing Ventilation & Accessories

800.800.8590 / [MarcoIndustries.com](http://MarcoIndustries.com)

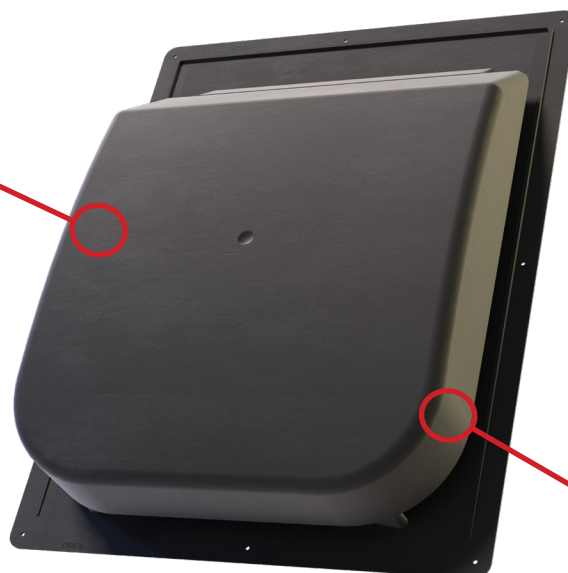


Marco's Rapid Response™ delivers, faster and easier. Take advantage of free shipping with low minimum orders.

# 65 SLANT BACK VENT



*Can be used  
as an intake or  
exhaust vent*



*Offers 65 Square  
Inches of Net Free  
Venting Area*

*Class 4 impact  
resistance rated*

*Lower profile for  
less visibility*

**Marco's patented 65 Slant Back Vent is made from no-break polypropylene material.**

- ▶ 65 Slant Back Vent offers 65 square inches of Net Free Venting Area.
- ▶ Higher NFVA means fewer roof penetrations, 1/3 of typical 50 NFVA vents.
- ▶ Suitable for any pitch from 2/12 to 16/12.
- ▶ 4 Side Crickets: sheds water around the throat of the vent, making it virtually leak proof.
- ▶ High wind deflector: located at the throat bottom - prevents wind driven rain from entering the vent.

- ▶ Arrow Locking Mechanisms: prevent cap blow offs.
- ▶ Will not Dent or Rust
- ▶ 17" x 22" size for easy installation
- ▶ Comes in three colors: Black, Brown, Weatherwood

## **Codes**

- ▶ Texas Dept of Insurance (TDI) RV-123
- ▶ Florida Building Code - FL38735
- ▶ UL 2218 Class 4 impact (hail) resistant

**Attics need to breathe to keep cool and dry with proper ventilation.**

- ▶ Reduces utility costs
- ▶ Prevents mold and mildew
- ▶ Extends shingle and roof deck life
- ▶ Eliminates damaging ice dams in winter
- ▶ Reduces air conditioning maintenance costs



Roofing Ventilation & Accessories



## The Marco Weather-Tite™ System

Closure

Ventilation

Fasteners

Flashing

Sealants

Underlayment

Accessories

- Value drives everything we do. That's why we developed our Steep Slope Ventilation Division. This comprehensive line of products offer easy installation, remarkable building ventilation, lower utility costs, extended shingle and roof deck life, extreme durability, and outstanding warranties. Get more quality, more performance, and more value...Marco Industries.™

**Net Free Venting Area:** 65 Square Inches of Net Free Area

**Dimensions:** Width 17" x Length 22" x Height 4.33"

**Materials:** No-break polypropylene

**Codes & Standards:** TDI, FL Building Code, CSA

**Color:** Black, Brown and Weatherwood

**Roof Pitch:** Conforms to any pitch from 2/12 to 16/12

**Patents:** US Pat No. 8,181,403, US Pat No. D629,093

**4 Side Crickets:** Sheds water around the throat of the vent, making it virtually leak proof

**Vent Weight:** 2.065 lbs per piece

**Pack Unit of Measurement:** 6 per carton

**Construction Details:** High Wind Deflector prevents wind driven rain from entering vent

**Durability:** Will not dent or rust, UL 2218: Class 4 Impact Resistance

**Arrow Shaped Locks:** Prevent cap blow offs



### Easy Install

See our installation online at [marcoindustries.com](http://marcoindustries.com)

1. Locate the roof vents toward the rear or side of the house spaced evenly over the width of the roof.
2. Mark the location of all roof vents before cutting holes. Center the holes between the rafters down two feet (24") from the peak of the roof. When installed as an intake vent please position vent at two feet (24") from the eave or edge of the roof. Ensure that attic insulation does not block intake vent.
3. Holes should be cut 11" High x 10" Wide. The Python™ 65 Slant Back Vent box has a template for error proof installation. Using the template mark the outline for the hole on the roof. The hole in the roof should never be larger than the hole at the bottom of the vent.
4. Shingle up until shingles cover the bottom of the hole. Cut the excess shingles away. Because shingles are part of a porous system applying an approved sealant around the edge of the hole is required.
5. The top of the Python™ 65 Slant Back Vent has a slanted peak. Ensure that the vents are installed with the peak at the UP position.
6. Secure the vent base with a minimum of 8 galvanized nails. Nails should be a minimum of 1¼" long and should penetrate the vent, shingle, and decking. Secure a nail in each corner of the vent flashing and along the middle of each side of the vent.
7. For proper sealing use a plastic friendly roofing sealant. All nails to receive a dab of sealant.
8. Shingle up and around the vent ensuring that the shingles butt up against the throat of the vent.
9. Pre-cut the top shingle to fit around the slant of the vent and nail in place. Shingle up as normal to complete installation.



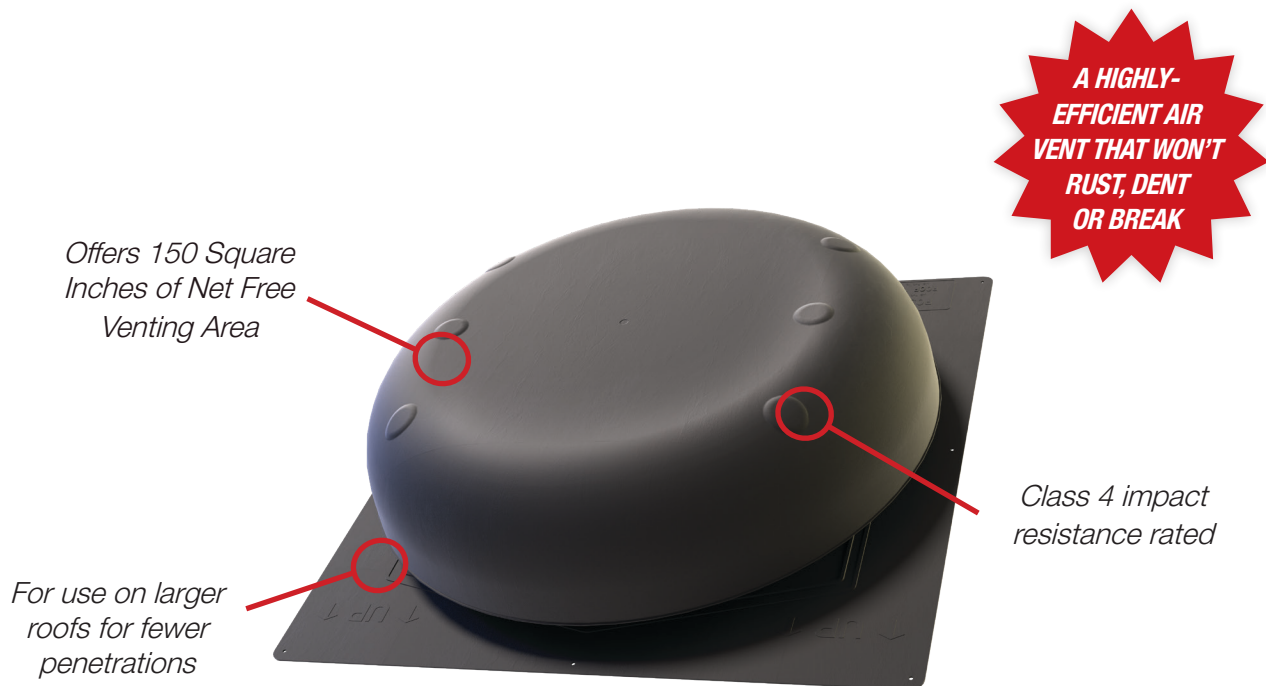
Roofing Ventilation & Accessories

800.800.8590 / [MarcoIndustries.com](http://MarcoIndustries.com)



Marco's Rapid Response™ delivers, faster and easier. Take advantage of free shipping with low minimum orders.

# 150 ROUND VENT



## Marco's patented 150 Round Vent is made from no-break polypropylene material.

- ▶ 50 Round Vent offers 150 square inches of Net Free Venting Area.
- ▶ Higher NFVA means fewer roof penetrations, 1/3 of typical 50 NFVA vents.
- ▶ Suitable for any pitch from 2/12 to 16/12.
- ▶ Virtually indestructible. No bending of flange or denting of dome.
- ▶ 26" x 26" size - easy to install.
- ▶ Requires a square cut out which is easier to cut on a roof.
- ▶ No sharp edges - safer to handle.

- ▶ Made of high impact Polypropylene with heat stabilizers and UV inhibitors throughout.
- ▶ Comes in three colors: Black, Brown, and Weatherwood
- ▶ Will not rust
- ▶ Green Product

### Codes

- ▶ Texas Dept of Insurance (TDI) RV-124
- ▶ Florida Building Code - FL38735
- ▶ UL 2218 Class 4 impact (hail) resistant
- ▶ CSA approved

## Attics need to breathe to keep cool and dry with proper ventilation.

- ▶ Reduces utility costs.
- ▶ Prevents mold and mildew.
- ▶ Extends shingle and roof deck life.
- ▶ Eliminates damaging ice dams in winter.



Roofing Ventilation & Accessories

## The Marco Weather-Tite™ System

Closure

Ventilation

Fasteners

Flashing

Sealants

Underlayment

Accessories

- Value drives everything we do. That's why we developed our Steep Slope Ventilation Division. This comprehensive line of products offer easy installation, remarkable building ventilation, lower utility costs, extended shingle and roof deck life, extreme durability, and outstanding warranties. Get more quality, more performance, and more value...Marco Industries.™

**Net Free Venting Area:** 150 Square Inches of NFVA

**Dimensions:** Width 26" x Length 26" x Height 6.97"

**Materials:** No-break polypropylene

**Codes & Standards:** TDI, FL Building Code, CSA

**Color:** Black, Brown and Weatherwood

**Roof Pitch:** Conforms to any pitch from 2/12 to 16/12

**Patents:** US Pat No. 7,544,124, US Pat No. 7,780,510, US Pat No. 10,415,252

**Vent Weight:** 4.34 lbs per piece

**Pack Unit of Measurement:** 1 per carton

**Construction Details:** With heat stabilizers and UV inhibitors throughout

**Durability:** Will not dent or rust, UL 2218: Class 4 Impact Resistance



### Easy Install

See our installation online at [marcoindustries.com](http://marcoindustries.com)

1. Locate the roof vents on the rear or side of the house evenly spaced on the width of the roof.
2. Mark the location of all roof vents before cutting holes. Center the holes between the rafters down at least two feet (24") from the peak of the roof.
3. Holes should be cut 17½" High x 15½" Wide. The Python™ 150 Round Vent box has a template for error proof installation. Using the template mark the outline for the hole on the roof. The hole in the roof cannot be larger than the hole in the bottom of the vent.
4. Shingle up until shingles cover the bottom of the hole. Cut the excess shingles away. Because shingles are part of a porous system applying an approved sealant around the edge of the hole is required.
5. The top of the Python™ 150 Round Vent has a molded in peak. Ensure that the vents are installed with the peak at the UP position.
6. Secure the vent base with a minimum of 8 galvanized nails. Nails should be a minimum of 1¼" long and must penetrate the vent, shingle, and decking. Secure a nail in the each corner of the vent flashing and along the middle of each side of the vent.
7. To seal the vent, use a plastic friendly roofing sealant. All nails must also receive a dab of sealant.
8. Shingle up and around the vent ensuring that the shingles butt up against the throat of the vent.
9. Pre-cut the top shingle to fit around the cricket of the vent and nail in place. Shingle up as normal to complete installation.



Roofing Ventilation & Accessories

800.800.8590 / [MarcoIndustries.com](http://MarcoIndustries.com)

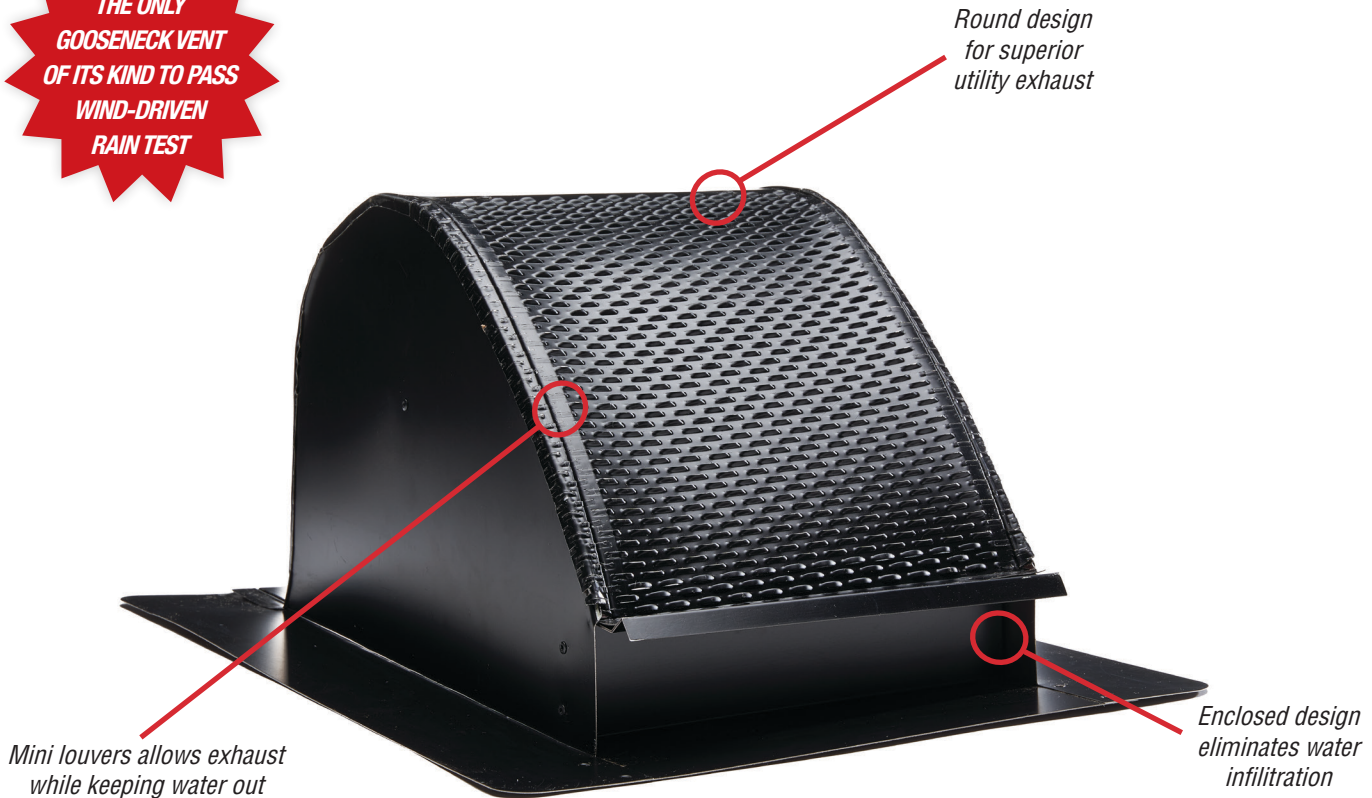


Marco's Rapid Response™ delivers, faster and easier. Take advantage of free shipping with low minimum orders.



# TILE GOOSENECK VENT

**THE ONLY  
GOOSENECK VENT  
OF ITS KIND TO PASS  
WIND-DRIVEN  
RAIN TEST**



**Marco's Tile Gooseneck Vent is suitable for tile, synthetic, cedar, shake, and slate roofs.**

The Tile Gooseneck Vent is the only vent of its kind to pass wind-driven rain testing. It's made from durable 26-gauge galvalume steel and its low vent profile and fully closed design can help reduce wind uplift. The Tile Gooseneck Vent has a round design that promotes superior airflow and makes it ideal for kitchen or bathroom exhausts.

- ▶ Quiet - no noisy damper opening and closing
- ▶ Does not allow water infiltration
- ▶ Suitable for any roof pitch from 3/12 to 12/12
- ▶ Mini louvers in vent hood block wind driven rain
- ▶ Interior louver panel captures any moisture directing it to the vent pan away from the attic
- ▶ Internal baffle offers a third line of defense against wind-driven rain
- ▶ Keeps insects and critters out
- ▶ Meets Energy Star color requirements
- ▶ High Quality & Durability - Reduces customer call-backs

*\*Not to be used as a laundry vent.*

## The Marco Weather-Tite™ System

Closure

Ventilation

Fasteners

Flashing

Sealants

Underlayment

Accessories

- Value drives everything we do. That's why we developed our Steep Slope Ventilation Division. This comprehensive line of products offer easy installation, remarkable building ventilation, lower utility costs, extended shingle and roof deck life, extreme durability, and outstanding warranties. Get more quality, more performance, and more value... Marco Industries.™

### Specs

**Dimensions:** Width 19-3/16" x Height 10-1/4"

**Materials:** 26 - gauge galvalume

**Codes & Standards:** FL Building Code,

**Color:** Mill and Colors on request

**Roof Pitch:** Conforms to any pitch from 3/12 to 12/12

**Patents:** Pending

**Sizes:** 4", 6" and 10"

**Vent Hood:** Mini louvers in lower portion of hood block water

**Interior Louver Panel:** Mini louvers in opposite direction to louvers on lower portion of hood as second water barrier

**Internal Baffle:** Placed at the top of the vent pan, the internal baffle is the third line of defense against water intrusion



Proudly Made in North America



### Easy Install

See our installation online at [marcoindustries.com](http://marcoindustries.com)

1. Select required vent size; 4" Vent, 6" Vent, or 10" Vent
2. When installing vents on an existing tile roof: remove tiles immediately around sides and top of opening to provide space to install vent as per instructions below.
3. Position vent over opening in deck.
4. Fasten side and top flanges securely with minimum 1¼" standard roofing nails spaced 4" on center and 1½" from outer edge of flange.
5. Seal flanges to sub-roof membrane as per substrate manufacturer recommendations.
6. Cut tile to fit around vent and install per tile manufacturer recommendations.



High Profile  
Tile Gooseneck Vent



Low Profile  
Tile Gooseneck Vent



Roofing Ventilation & Accessories

800.800.8590 / [MarcoIndustries.com](http://MarcoIndustries.com)



Marco's Rapid Response™ delivers, faster and easier. Take advantage of free shipping with low minimum orders.

# TILE OFF-RIDGE VENT



## Marco's Tile Off-Ridge Vent is suitable for tile, synthetic, cedar, shake, and slate roofs.

The Tile Off-Ridge Vent contains perforated panel technology, which allows it to outperform other off-ridge vents in wind-driven rain tests. It is guaranteed to have zero water entry at 110MPH wind-driven rain. Marco's Tile Off-Ridge Vent has a unique, completely enclosed design that, along with its low vent profile, helps reduce wind uplift and eliminates water infiltration.

- ▶ Innovative fully enclosed design
- ▶ Does not allow water infiltration
- ▶ No additional external baffle is needed in the front of the vent, saving time and money
- ▶ Made from durable 26-gauge galvalume steel
- ▶ Suitable for any pitch from 3/12 to 12/12
- ▶ 25 square inches of Net Free Venting Area per lineal foot and 100 square inches per 4 ft. unit
- ▶ Meets Energy Star color requirements
- ▶ Keeps insects and critters out
- ▶ High Quality & Durability - Reduces customer call-backs

## Attics need to breathe to keep cool and dry with proper ventilation.

- ▶ Reduces air conditioning maintenance costs
- ▶ Prevents mold and mildew
- ▶ Prevents wood rot which extends shingle and roof deck life
- ▶ Reduces utility costs



Roofing Ventilation & Accessories

## The Marco Weather-Tite™ System

Closure

Ventilation

Fasteners

Flashing

Sealants

Underlayment

Accessories

- Value drives everything we do. That's why we developed our Steep Slope Ventilation Division. This comprehensive line of products offer easy installation, remarkable building ventilation, lower utility costs, extended shingle and roof deck life, extreme durability, and outstanding warranties. Get more quality, more performance, and more value... Marco Industries.™

### Specs

**Net Free Area:** 25 sq. in. per Lineal ft

**Material:** 26 - Gauge Galvalume

**Codes & Standards:** FL Building Code

**Dimensions:** Width 23-1/2" x Height 6"

**Nominal Lengths:** 4'

**Color:** Black, Weatherwood, Mill

**Screws:** 1 3/4 Wood Type for Bottom Flange

**Roof Pitch:** Conforms to any pitch from 3/12 to 12/12

**Patents:** Pending

**Vent Hood:** Mini louvers in hood blocks water

**Interior Louver Panel:** Mini louvers in opposite direction to louvers on lower portion of hood as second water barrier

**Internal Baffle:** Placed at the top of the vent pan, the internal baffle is the third line of defense against water intrusion



Proudly Made in North America



### Easy Install

See our installation online at [marcoindustries.com](http://marcoindustries.com)

1. Space vent openings evenly across ridge. The opening size should be a minimum of a 2 1/2" by 46" cut between 2 sets of rafters. Note: Do not cut into rafters
2. If tiles have previously been installed on the roof, remove the tiles around sides and top of opening to provide space to install vent as per instructions.
3. Position vent over opening in deck.
4. Fasten side and top flanges securely with minimum 1 1/4" standard roofing nails. Space nails approximately 4" on the center and approximately 1 1/2" from outer edge of flange.
5. Seal flanges to sub roof membrane as per substrate manufacturer recommendations.
6. Cut tile to fit around vent and install per tile manufacturer recommendations.



Roofing Ventilation & Accessories

800.800.8590 / [MarcoIndustries.com](http://MarcoIndustries.com)

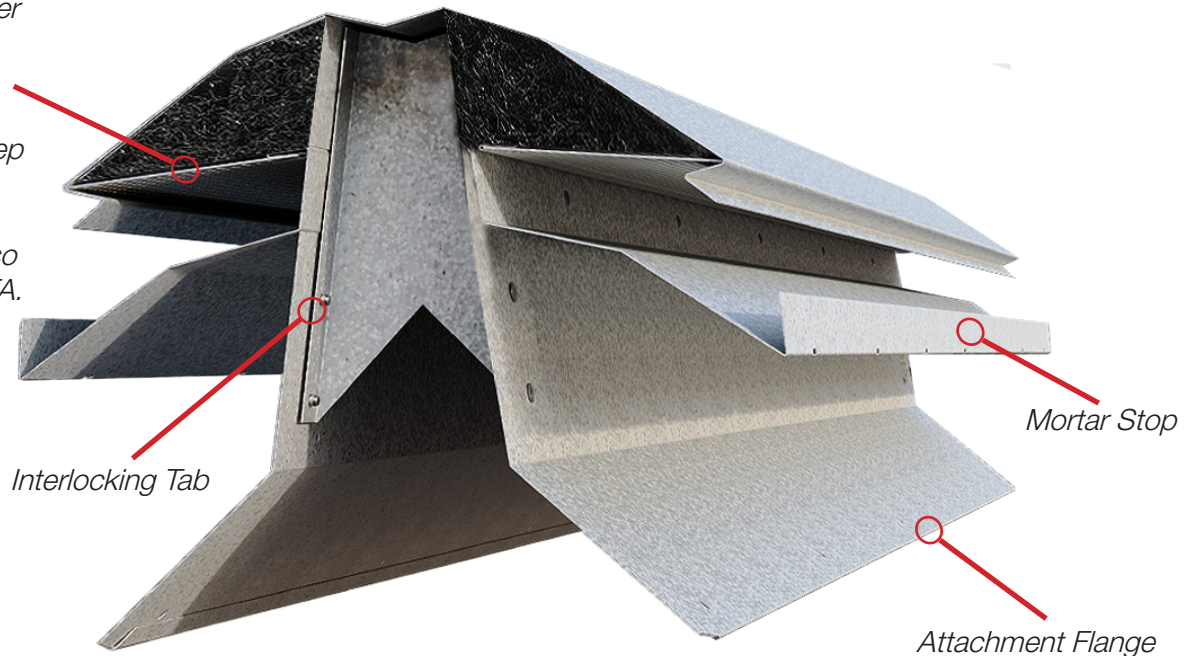


Marco's Rapid Response™ delivers, faster and easier. Take advantage of free shipping with low minimum orders.



# UNIVERSAL TILE RIDGE VENT

*The perforated barrier and Weather-Tite nonwoven baffle create a multiple barrier system to keep out vermin, dust, debris, and wind-driven rain, while also allowing superior NFA.*



**Marco's Universal Tile Ridge Vent is an industry first, offering superior attic ventilation for homeowners and easy installation for you.**

Made with rugged 26-gauge Galvalume steel, its durable design doesn't require a ridge board or separate brackets to install. The simple end-overlap unit feature prevents water infiltration at the seams. And a 40-year limited warranty offers peace of mind for decades to come.

- ▶ Fits any pitch from 3/12 to 12/12
- ▶ Keeps out leaks and wind-driven rain
- ▶ Provides 20 square inches of Net Free Venting Area per lineal foot and 80 square inches per unit
- ▶ Delivers optimal ventilation with installation at the ridge of the roof
- ▶ Offers pleasing aesthetics as it is concealed under the ridge cap
- ▶ TAS-100(a)-approved to meet the most stringent hurricane testing requirements
- ▶ Keeps out insects, critters, rain, snow, and debris with its advanced baffling system
- ▶ Reduces customer call-backs with quality build and durable design



Roofing Ventilation & Accessories

## The Marco Weather-Tite™ System

Closure

Ventilation

Fasteners

Flashing

Sealants

Underlayment

Accessories

- Value drives everything we do. That's why we developed our Steep Slope Ventilation Division. This comprehensive line of products offer easy installation, remarkable building ventilation, lower utility costs, extended shingle and roof deck life, extreme durability, and outstanding warranties. Get more quality, more performance, and more value...Marco Industries™

### Specs

**Net Free Area:** Over 20 sq. in. per Lineal ft, 80 sq. in per unit

**Material:** 26 - Gauge Galvalume and non-woven composite polyester

**Nominal Lengths:** 4'

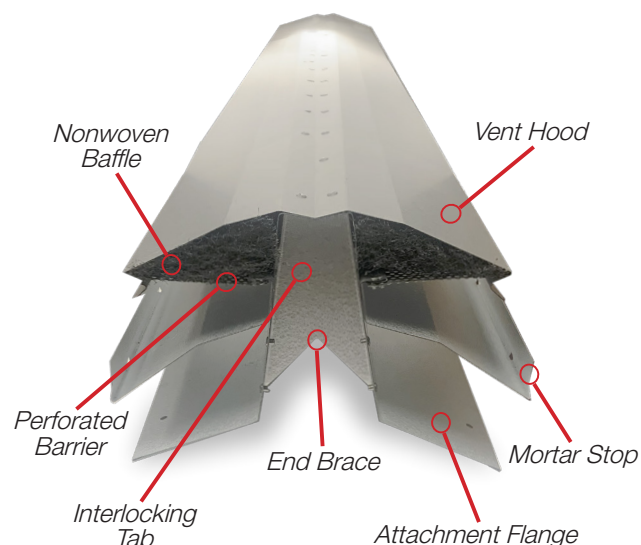
**Heights:** 5" available

**Codes & Standards:** FL Building Code

**Color:** Mill

**Roof Pitch:** Conforms to any pitch from 3/12

**Patents:** Pending



### Easy Install

Visit our website at [MarcoIndustries.com](http://MarcoIndustries.com) for installation videos

1. Install tile roof components; roofing underlayment, battens (if used), and field tiles up to the row just below the ridge where the Universal Tile Ridge Vent will be installed. All components should be installed per the Tile Roof Institute installation manual observing specific regional climate requirements.
2. Using a chalk line, mark 1" on both sides of the ridge for truss construction (1" beyond ridge pole) as a guide for cutting a slot in the decking. The slot should be no closer than 12" to the end of the ridge.
3. Cut a 2" slot in the roof ridge on the bottom of the decking using a circular saw - avoid cutting trusses and rafters.
4. To ensure proper alignment along the ridge, run a chalk line down both sides of the ridge.
5. Center the Universal Tile Ridge Vent over the ridge slot. Use sealant recommended by the underlayment manufacturer between the vent flange and the roof deck. Place the first vent with the male end facing inwards. The vent flanges have a built in 6:12 pitch; for shallower roof pitches, simply press the vent downwards to flatten the flanges against the roof deck. For steeper pitches, press the vent body against the deck and bend the flanges against the deck while nailing in place.
6. Fasten the vent to the roof deck on approximately 12" centers using a nail gun, or hand nail using the existing pre-punched holes.
7. Apply a generous bead of Marco Weathertite™ Sealant along the circumference of the male end flange, including the deck flanges. Lower the female end of the next vent into place over the male end of the first vent, ensuring the sealant fills any gaps. Hold the vent down while nailing it into place. Repeat for all subsequent vents. Vents are self-centering to each other when sleeved together.
8. Cut the ridge anchor accessory to a length long enough so that it is flush with the edge of the roof. Place the ridge anchor adjacent to the Universal Tile Ridge Vent and seal with mastic and/or sealant. Fill end of ridge anchor with mortar to seal.
9. Install the cap tiles with mortar, adhesive, or fasteners.



Roofing Ventilation & Accessories

800.800.8590 / [MarcoIndustries.com](http://MarcoIndustries.com)



Marco's Rapid Response™ delivers, faster and easier. Take advantage of free shipping with low minimum orders.

# CLOSURE

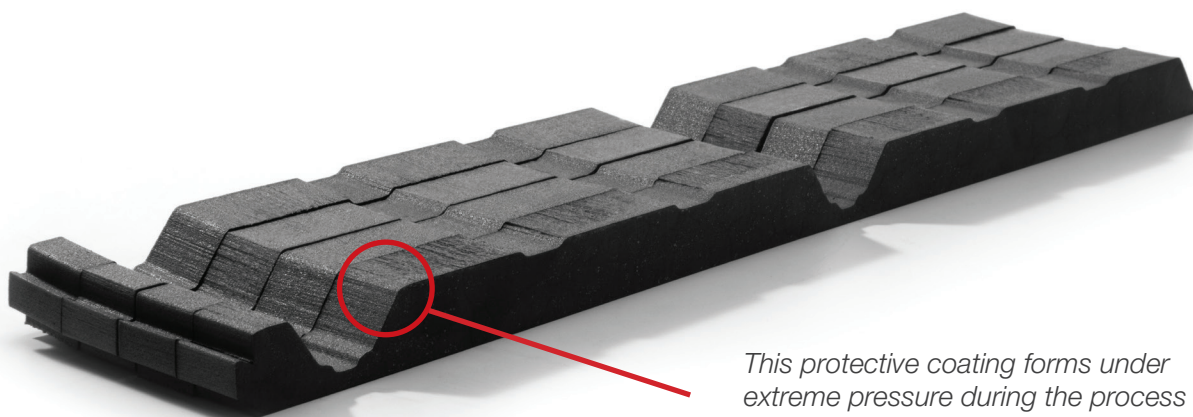
ANGLEKUT™ | CLOSURE FOAM™



Roofing Ventilation & Accessories

# CLOSURE-FOAM

CUSTOM FIT FOAM CLOSURE SYSTEM



*This protective coating forms under extreme pressure during the process of manufacturing and shields the product from harmful UV rays.*

**Closure-Foam™ comes in more than 450 standard profiles and custom sizes.**

Designed to stay put, Marco's M63 industrial adhesive eliminates blow away problems with an adhesive bead applied to either the flat or the ribbed side of Closure-Foam. It even adheres in subfreezing temperatures and on wet surfaces.

Closure-Foam is most commonly used without dovetails, but is also available with interlocking dovetails

(with or without adhesive) to eliminate gaps and ensure a snug end-to-end fit. They ship pre-scrapped leaving you with less job site cleanup.

Closure-Foam is economically priced without sacrificing quality. Marco's crosslink polyethylene foam has a unique coating that gives it better UV resistance and durability than the industry standard. Independent testing confirms Marco's 1.5 density foam provides better UV stability than competitive products with a 2.0 density.

- Full bead (once installed) of adhesive applied
- Profiles for every application
- Thickness variety
- 40-year limited warranty
- Better UV resistance/longer lasting than competition
- No excess scrap for easier cleanup

**CLOSURE-FOAM™**



Roofing Ventilation & Accessories



- Value drives everything we do. That's why we developed the Marco Weather-Tite System — a comprehensive line of products that offers easy installation, remarkable building ventilation, lower utility costs, extreme durability, and outstanding warranties. Get more quality, more performance and more value ... from Marco.



## Specs

**Nominal Density-Skin/Skin (BS ISO 7214 1998):**  
24 kg/m<sup>3</sup>

**Cell Size, Typical Diameter:** 0.3 mm

**Compression Stress-Strain (BS ISO 7214 1998)**

**10% compression:** 34 kPa

**25% compression:** 53 kPa

**40% compression:** 85 kPa

**50% compression:** 118 kPa

**Compression Set:** 25% comp, 22hr, 23° C/73° F

**1/2 hr recovery (25 mm cell-cell):** 27% set

**24 hr recovery (25 mm cell-cell):** 19% set

**Tensile Strength (ISO 7214 1998):** 320 kPa

**Tensile Elongation:** 130%

**Tear Strength (BS EN ISO 8067 1995):** 495 N/m

**Shore Hardness 00 Scale, 10 mm cell/  
cell thickness (ISO 868 1985):** 50 00

**Recommended Operating Temp. Range:**  
+100° C/-70° C (+212° F/-97° F)

**Thermal Conductivity — Mean Temp of 10° C/  
50° F (ISO 8302 1991):** 0.0392 W/m.K

**Flammability — Automotive (FMVSS.302-  
Burn Rate):** Pass 12 mm & thicker <100mm/min

**Flammability — Horizontal Burn Rate  
(ISO 7214 1998):** 5 mm thick, 2.1 mm/sec  
and 13 mm thick, 1.5 mm/sec

**Durometer (50):** Shore 00

**Water:** 5% lbs/ft<sup>3</sup>

\*Specs shown are LD24 value.

Proudly made in North America

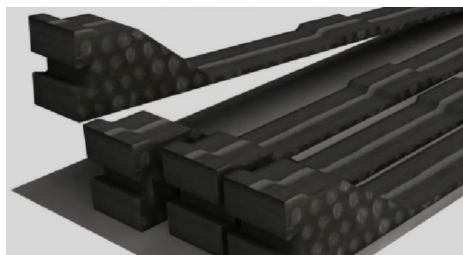


## You May Also Need

- Mastix™ / Anglekut™

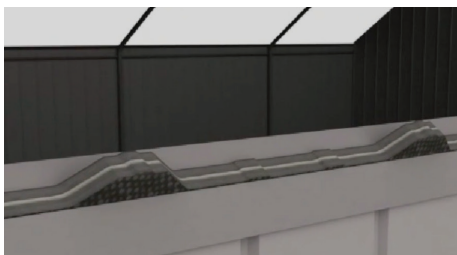
## Easy Install

See our installation instructions online at [MarcoIndustries.com](http://MarcoIndustries.com). Closure-Foam can be installed by a single person in just three easy steps.



### Step 1:

Ensure the self-adhesive closure configuration fits the roof panel used.



### Step 2:

The inside Closure fits the underside of the panel.



### Step 3:

Place the roof panel over pre-cut closure configuration for a snug fit. Attach panel over closure with Marco QuikGrip™ or QuikDrill™ fasteners.

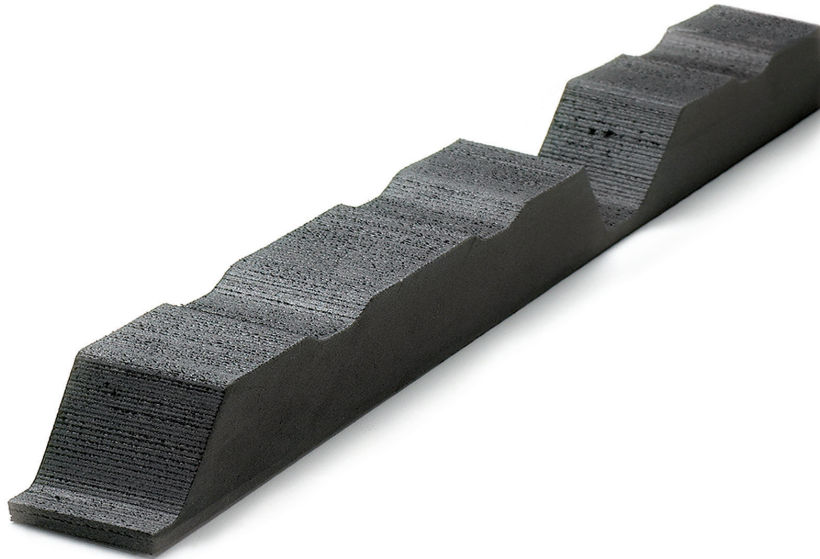


Roofing Ventilation & Accessories

800.800.8590 / [MarcoIndustries.com](http://MarcoIndustries.com)

# ANGLEKUT

## BEVELED CLOSURE SYSTEM



**If you want an easy-order,  
superior seal beveled closure,  
Anglekut's got you covered.**

Why beveled closures? Because a beveled closure's unique design creates a superior seal between metal roof panels that stops heavy and damaging water from getting in and around the hips and valleys of the roof.

And because Anglekut™ can be made at any angle, it will fit any profile and seal out wind, water, birds, and noise. That makes this product ideal

for use in the construction of barns, warehouses, house roofs, and other types of metal roof structures.

Beveled closure designs make a valley or hip application easy to install. And you wind up with a seal as air tight as standard 90-degree closure strips.

Anglekut beveled closures are made from crosslink polyethylene foam, the same material as M-Cell closures, which means they'll last the lifetime of the building. Because the product doesn't bleed, dry out, or dissolve with weather and UV exposure, using

1-1/2" thick foam increases the strength of the beveled closure and ensures a superior seal of the open area.

The dynamic design of these beveled closures makes it an easy replacement for materials like polyurethane strips or caulking.

Think it will be hard to order a beveled closure product? No way. Just fill out Anglekut Easy-Order Form on the back of this sheet. You'll get quick turnaround, too!

# ANGLEKUT



Roofing Ventilation & Accessories

- Value drives everything we do. That's why we developed the Marco Weather-Tite System—a comprehensive line of products that offers easy installation, remarkable building ventilation, lower utility costs, extreme durability, and outstanding warranties. Get more quality, more performance and more value ... from Marco.

## ANGLEKUT™ Easy Order Form

It's fast and easy to order Angle-Kut. Just call 1-800-800-8590 and we'll walk you through each step in minutes!

Anglekut Easy  
Order Form

Date \_\_\_\_\_ Customer P.O.# \_\_\_\_\_ Job # \_\_\_\_\_

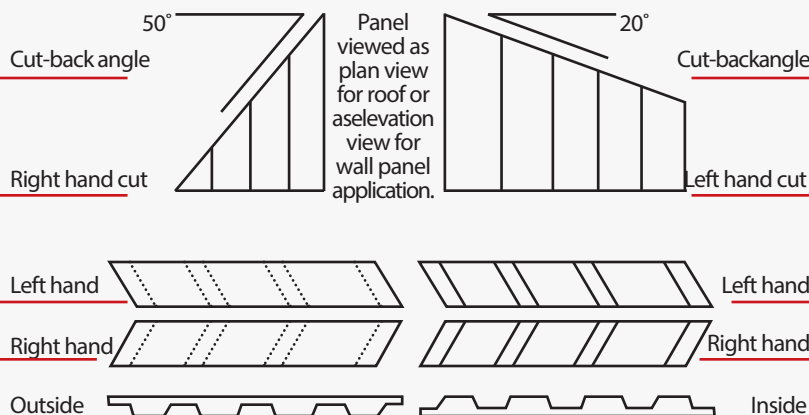
**Complete the following information for each separate closure configuration and beveled angle:**

1. Panel Name: \_\_\_\_\_
2. Application: End Wall \_\_\_\_\_ Hip \_\_\_\_\_ Valley \_\_\_\_\_
3. Cut-back Angle: \_\_\_\_\_
4. Roof Slope (Rise/Run) \_\_\_\_\_ / \_\_\_\_\_
5. A. Number of Panels - Inside: Left Hand \_\_\_\_\_ Right Hand \_\_\_\_\_  
Outside: Left Hand \_\_\_\_\_ Right Hand \_\_\_\_\_

**OR**

- B. Quantity in Lineal Ft. - Inside: Left Hand \_\_\_\_\_ Right Hand \_\_\_\_\_  
Outside: Left Hand \_\_\_\_\_ Right Hand \_\_\_\_\_

**Key to order entry information:**



Roofing Ventilation & Accessories

800.800.8590 / MarcoIndustries.com



Marco's Rapid Response™ delivers, faster and easier. Take advantage of free shipping with low minimum orders.

# FLASHING

ROOFBOOTS™ | EXPANDABLE EDGE STRIP



**MARCO**  
INDUSTRIES™

Roofing Ventilation & Accessories

## Get A Superior Seal, In A Flash.

Marco delivers everything you need to seal pipes securely. From a huge variety of Master Flash® RoofBoots to expandable edge strip for awkward flashing shapes and surfaces. With Marco as your one-stop-shop, you'll get the roof flashing you need quickly, and rest easy knowing you're getting industry-leading warranties and Weather-Tite performance.

### The Marco Weather-Tite™ System

Closure

Ventilation

Fasteners

Flashing

Sealants

Underlayment

Accessories

Our flashing products are made of EPDM or silicone and compounded specifically for maximum resistance to weathering due to ozone and ultraviolet light. As part of the exclusive Marco Weather-Tite System, they offer easy installation, superior performance, and tremendous value.

You may also need



Marco's Weather-Tite™  
Metal Roof Sealant



## UNIVERSAL ROOFBOOT

**ROUND  
FLEXIBLE SLEEVE**

The proven choice with a 20-year warranty.

- Easy, on-site customization for superior fit
- Sleeve flexibility absorbs vibration and pipe movement caused by expansion/contraction
- Maximum resistance to ozone weathering
- Available in black or grey EPDM, red or grey silicone, or colors upon request

**ROOFBOOTS™**

### Specs

**Ozone Resistance:** 70 hrs @ 500pphm (EPDM and RS)\*

### High Temp. Resistance:

Intermittent: +135°C/+275°F (EPDM), +260°C/+500°F (RS)

Continuous: +100°C/+212°F (EPDM), +225°C/+437°F (RS)

**Low Temp. Resistance:** -55°C/-67°F (EPDM),  
-74°C/-101°F (RS)

**Compression Set:** 25% (EPDM), 50% (RS)

\*RS = Red Silicone

	Pipe Range	Base
Mini	0" - 3/4"	4" (101 mm)
#1	1/4" - 2 1/2"	3 1/4" (82 mm)
#2	1 3/4" - 3"	6 1/4" (158 mm)
#3	1/4" - 5"	7 3/4" (196 mm)
#4	3" - 6 1/4"	9 1/4" (234 mm)
#5	4 1/4" - 7 3/4"	10 1/2" (266 mm)
#6	5" - 9"	13" (330 mm)
#7	6" - 11"	14 1/2" (368 mm)
#8	7" - 13"	16 1/2" (412 mm)
#9	9" - 19"	25 1/4" (641 mm)



Fasteners





## STANDARD ROOFBOOT

### SQUARE FLEXIBLE SLEEVE

Standard 20-year warranty, 35-year warranty available.

- Easy, on-site customization for superior fit
- Sleeve flexibility absorbs vibration and pipe movement caused by expansion/contraction
- Maximum resistance to ozone weathering
- The first ICC-listed flashing in the metal building industry with a 35-year warranty (available on black EPDM only)
- Available in black or grey EPDM, red or grey silicone, or colors upon request

#### Specs

**Ozone Resistance:** 70 hrs @ 500pphm (EPDM and RS)

#### High Temp. Resistance:

Intermittent: +135°C/+275°F (EPDM), +260°C/+500°F (RS)

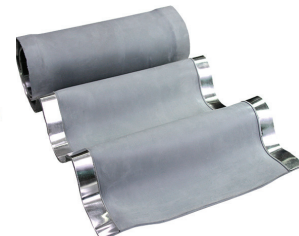
Continuous: +100°C/+212°F (EPDM), +225°C/+437°F (RS)

**Low Temp. Resistance:** -55°C/-67°F (EPDM),  
-74°C/-101°F (RS)

**Compression Set:** 25% (EPDM), 50% (RS)

\*RS = Red Silicone

	Pipe Range	Base
Mini	1/8" - 3/4"	2 1/4" (57 mm)
#1	1/4" - 2 3/4"	4 1/2" (114 mm)
#2	7/8" - 4"	6" (152 mm)
#3	1/4" - 5 3/4"	8" (203 mm)
#4	2 3/4" - 7"	10" (254 mm)
#5	4" - 8 1/4"	11" (279 mm)
#6	4 3/4" - 10"	12" (279 mm)
#7	5 1/2" - 11 1/2"	14" (355 mm)
#8	6 3/4" - 13 1/2"	17" (431 mm)
#9	9 1/2" - 20 1/2"	25" (635 mm)
Maxi	12" - 28 1/2"	34" (863 mm)



## COMPLETE LINE OF FLASHING

### SPECIALTY BOOTS / STRIP FLASHING

Superior solutions for every flashing application.

#### Specialty

- Contact Marco for multi-flash, solar, multi-port and other specialty boots

#### Retrofit

- Round or square boots available in three sizes
- 20-year warranty
- Available in black or grey EPDM or silicone

#### Extreme Angle

- Choose to handle any extreme roof pitch
- 20-year warranty
- Available in black EPDM or grey silicone

#### Box Gutter Expansion Joint

- Expandable edge strip flashing in grey EPDM
- Flashes hi-rib and standing-seam profiles
- Stretch and form to fit and seal
- Flash between dissimilar materials
- Ideal for square ducts, chimneys, skylights
- 20-year warranty
- Available in 9" width by 12', 33' and 50' lengths

#### RoofBoot Installation

For a manufacturer's installation video or roof pitch calculator, visit [marcoindustries.com/roofboots](http://marcoindustries.com/roofboots)

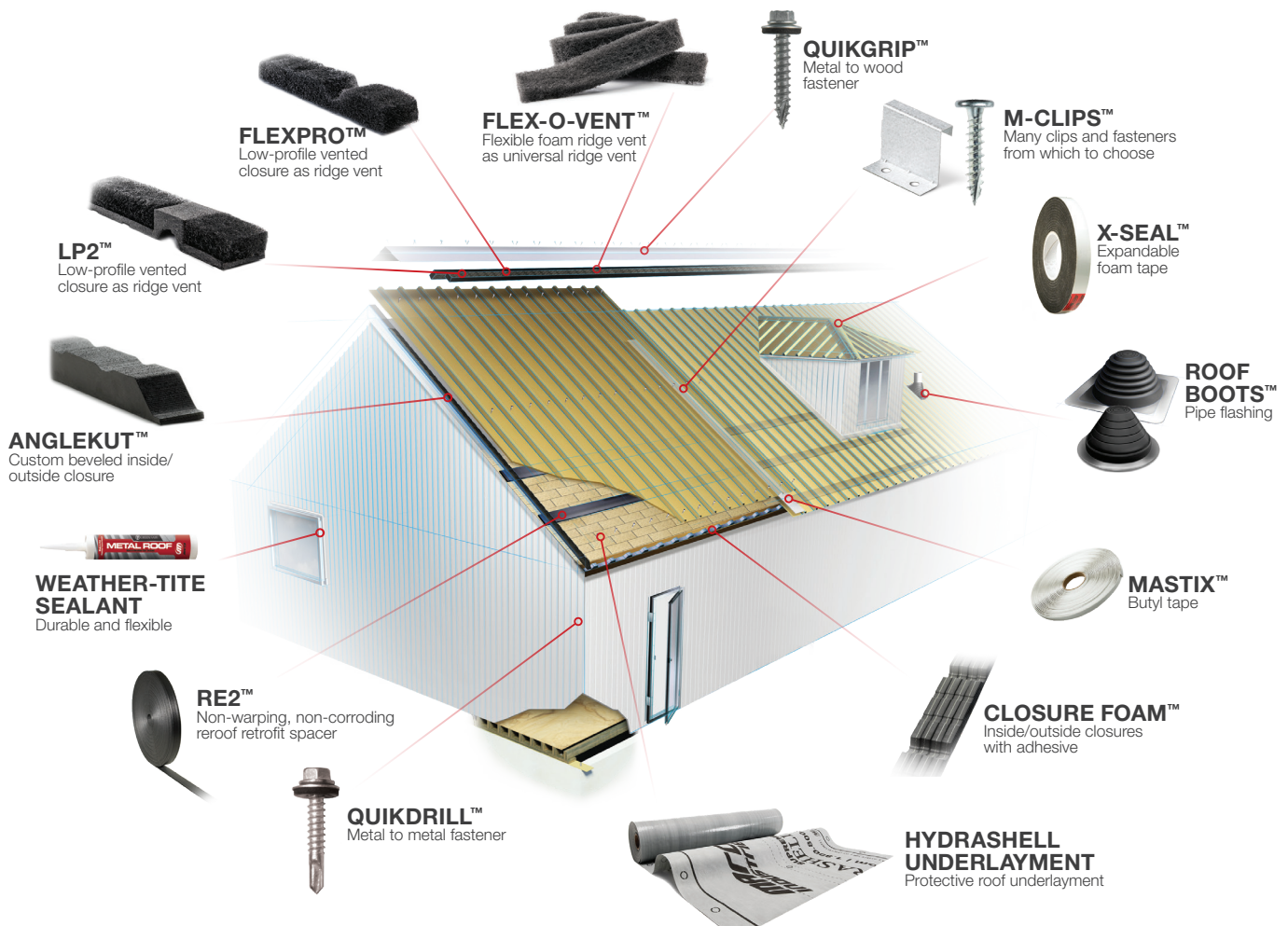


Our Universal and Standard RoofBoots are available in black or grey EPDM, red or grey silicone, or these custom colors upon request. \*Call for availability.



**Value Through The Roof.** Value drives everything we do. That's why we've delivered industry-leading customer service for more than twenty years. And that's why we developed the Marco Weather-Tite System—a comprehensive line of products that offers easy installation, remarkable building ventilation, lower utility costs, extreme durability, and outstanding warranties. If you want to build it right, buy it smart. Get more quality, more performance and more value ... from Marco.

## The Marco Weather-Tite System



Roofing Ventilation & Accessories

800.800.8590 / [MarcoIndustries.com](http://MarcoIndustries.com)



Marco's Rapid Response™ delivers, faster and easier. Take advantage of free shipping with low minimum orders.

# VALLEY CAP

## FLASHING APPLICATION SYSTEM

Designed to prevent leaks where Primary and Secondary Roofs Intersect With Valleys

### Weather Protection Made of EPDM

These flashings are compounded specifically for maximum resistance to weathering due to ozone and ultraviolet light.

### Available in two sizes

D-Cap A - For Pitch 7/12 or more

Opening	12-1/4" (311mm)
Inner Depth	3" (76mm)
Overall Height	1-1/4" (31mm)
Base	11-3/4" x 20-1/8" x 11-3/4" (298x511x298mm)

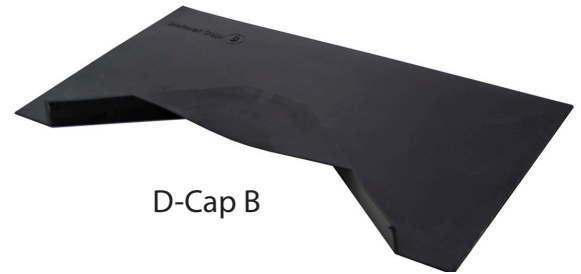
D-Cap B - For Pitch 6/12 or less

Opening	16-1/2" (419mm)
Inner Depth	3" (76mm)
Overall Height	1-1/4" (31mm)
Base	11-3/4" x 20-1/8" x 11-3/4" (298x511x298mm)

Advanced Ozone Resistance tested to..		EPDM 70 hour @ 500 pphm
High Temperature Resistance Tested to	Intermittent	+135°C (+275°F)
	Continuous	+100°C (+212°F)
Low Temperature Resistance tested to.....		-55°C (-67°F)
Compression Set Maximum...		25%



D-Cap A



D-Cap B

### Easy On- Site Customization

Fast, one piece construction allows for easy on-site installation.

### Adaptable Base

The base is designed to fit most roof pitches and valley conditions.

Eliminates Bulge and Maintains Straight Ridge Line

**20**  
YEAR  
WARRANTY

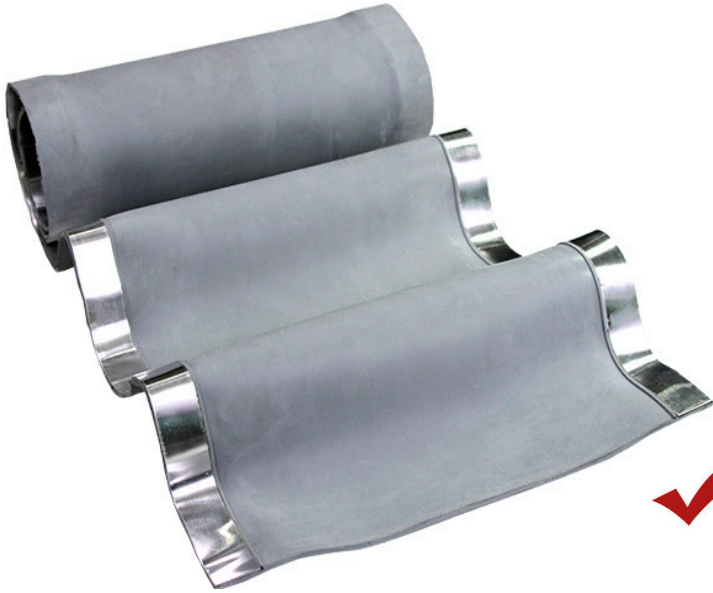
Proudly made in North America



800.800.8590 / [MarcoIndustries.com](http://MarcoIndustries.com)

# Box Gutter Expansion Joint

## Expandable Edge Strip Flashing



### Features:

- 9" (228mm) width
- .059 mm thick
- 12ft., 33ft., and 50ft lengths
- Made of Grey ozone resistant EPDM

### Applications:

- Transition Walls
- Parapet Walls
- Stepped Roofs
- Corrugated Metal Roofs
- Roof Penetrations
- Expansion Joint
- Skylights

**20**  
**YEAR**  
WARRANTY

For detailed product information or to speak with your salesperson call Marco Industries at 800-800-8590.

### Box Gutter Expansion Joint

Compound	Part No.	Flashing Details
Grey EPDM	MFBGE912	9 in Wide 12 ft Long (9" x 12')
Grey EPDM	MFBGE933	9 in Wide 33 ft Long (9" x 33')
Grey EPDM	MFBGE950	9 in Wide 50 ft Long (9" x 50')



Value through the Roof.

800.800.8590 / [MarcoIndustries.com](http://MarcoIndustries.com)



Marco's Rapid Response™ delivers, faster and easier. Take advantage of free shipping with low minimum orders.

# SEALANTS

MASTIX™ | X-SEAL™ | MARCO'S WEATHER-TITE™ METAL ROOF SEALANT



Roofing Ventilation & Accessories



# MARCO'S WEATHER-TITE METAL ROOF SEALANT

ECO-FRIENDLY SEALANT



**Marco's Weather-Tite™ Metal Roof Sealant** **Stands up to the elements.** Marco's Weather-Tite™ Roof Sealant is specifically formulated to outperform all other sealant technologies, including silicones, tri-polymers, and polyurethanes. The superior polymer formula provides exceptional adhesion to Kynar™, Hylar™, Galvalume®, coated and uncoated metal surfaces, plastics, glass, wood, and vinyl.

The product is ideal for use on a wide variety of metal roof, trim, metal, vinyl siding, aluminum, gutters, flashing, windows, doors, and vents materials. It also provides unbeatable adhesion to wood, brass, and other common building substrates.

Marco's Weather-Tite™ Roof Sealant comes in 14 standard colors to match today's popular metal roof and metal siding materials, regardless of manufacturer. (For details regarding additional, custom color options, call Marco Sales, 800-800-8590.)

The product extrudes in extreme weather conditions (down to 0° F) and is UV-resistant, making it the ideal choice for exterior applications and damp surfaces. It will expand and contract in changing weather and temperature and will not crack. This sealant chemically cures <1% VOC.

- Waterproof seal against water, wind, dust, dirt or other filtrations
- Adheres to almost any common building substrate or material
- 14 standard colors
- Tack-free in 40 minutes
- Paintable (excluding translucent)
- Chemically curing <1% VOC
- 18 month shelf life
- Made in North America



Roofing Ventilation & Accessories

## The Marco Weather-Tite™ System

Closure

Ventilation

Fasteners

Flashing

Sealants

Underlayment

Accessories

► Value drives everything we do. That's why we developed the Marco Weather-Tite System—a comprehensive line of products that offers easy installation, remarkable building ventilation, lower utility costs, extreme durability, and outstanding warranties. Get more quality, more performance and more value ... from Marco.

### Specs

**Water Clean-Up:** Yes

**Non-Toxic:** Yes

**Non-Flammable:** Yes

**VOC-Compliant:** <1% VOC

**Cold Weather Extrusion:** 0° F

**Waterproof:** Yes

**Tensile Strength:** 225 psi

**Conforms to ASTM C920:** Yes

**Tack-Free:** Tack-Free in 40 minutes @ 77° F / 50% RH

**Gap Filling:** 1"

**Service Temperature:** -75° to 220° F for short periods of time

**UV Rating:** Conforms to ASTM G26

**Elongation:** 450-500%

**Cartridge:** Plastic – 10.1 oz.

**Warranty:** Limited

### Sample Colors



WT-WT09



WT-WT10



WT-TN17



WT-TN29



WT-BN50



WT-BZ35



WT-GY54



WT-GY61



WT-GY01



WT-BK71



WT-GN80



WT-RD01



WT-UC03



WT-TL01

### You May Also Need

► Roof Boots / X-Seal™

## Easy Install

See our installation instructions online at [MarcoIndustries.com](http://MarcoIndustries.com). Marco's Weather-Tite Metal Roof Sealant comes in a variety of colors and goes on easily. If touch-ups are necessary, it may be painted (excluding translucent) with a water-based paint after one hour of application.



Step 1:



Step 2:



Step 3:



Roofing Ventilation & Accessories

800.800.8590 / [MarcoIndustries.com](http://MarcoIndustries.com)



Marco's Rapid Response™ delivers, faster and easier. Take advantage of free shipping with low minimum orders.

# MASTIX

## BUTYL TAPE



**Flexible metal-to-metal adhesive that stays in place, even in extreme heat.** Marco Industries has created a high quality trimmable joint and end lap sealing tape that solves the adhesive failure problems associated with hot metal roofing and wall jobs.

Mastix™ is made with a superior adhesive which is non-staining, permanently flexible, and stays in place during extreme heat. It seals around windows, doors, roof vents, stacks, access doors and other penetration points.

The adhesive actually prevents the product roll from “telescoping”...a common problem when other adhesives get too hot and cause a tape roll to start losing its shape. Which then causes the installer more handling problems and installation time.

Then, once Mastix™ is applied, it truly adheres to the metal roof panel and stays in position even on the hottest days. So you don't have to mess with a failing adhesive strip sliding down the hot metal roof before you can overlay the next roofing panel.

Don't sweat your next metal roofing job. Choose Mastix™ and get the job done easier and faster, even on the hottest days.

- Trimmable joint and end lap sealing tape
- Non-staining, permanently flexible
- Seals around windows, doors, roof vents, and more
- Roll won't telescope from heat before installation
- Keeps even hot metal roofing panels in place—no melting or oozing
- Made in the USA

# MASTIX



Roofing Ventilation & Accessories

## The Marco Weather-Tite™ System

Closure

Ventilation

Fasteners

Flashing

Sealants

Underlayment

Accessories

► Value drives everything we do. That's why we developed the Marco Weather-Tite System — a comprehensive line of products that offers easy installation, remarkable building ventilation, lower utility costs, extreme durability, and outstanding warranties. Get more quality, more performance and more value ... from Marco.

### Specs

**3/32" x 3/8" x 45':** 16 rolls/carton, 30 carton/pallet

**3/32" x 1/2" x 45':** 16 rolls/carton, 30 carton/pallet

**3/32" x 3/4" x 45':** 16 rolls/carton, 30 carton/pallet

**3/32" x 1" x 45':** 12 rolls/carton, 30 carton/pallet

**Chemical Name:** Isobutylene

**Chemical Family:** Butyl Mixture

**Health Hazard:** 0-Minimal

**Flammability Hazard:** 0-Minimal

**Reactivity Hazard:** 0-Minimal

**Volatile (WL)%:** 0

**Solubility in Water:** Insoluble

**Specific Gravity (H2O=1):** 1.59-1.64

**Evaporation Rate:** Not Applicable

**Appearance:** Soft, pliable gum

**Color:** Q-126 (off-white to gray), Q126BB (black), Q-126-10 (off-white to gray)

**Odor:** None



### You May Also Need

► Roof Boots™ / Weather-Tite Metal Roof Sealant

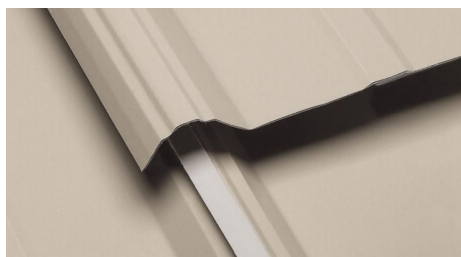
### Easy Install

See our installation instructions online at [MarcoIndustries.com](http://MarcoIndustries.com). Mastix requires no tools for installation. It comes in an easy-to-handle roll and the adhesive is quickly exposed with a simple peel-back.



#### Step 1:

Roll Mastix Butyl Tape out on through-fastened and standing seam panels, removing the release paper to expose adhesive.



#### Step 2:

Position panel over Mastix.



#### Step 3:

When positioned, press panel down on Mastix and fasten in place with QuikDrill™ or QuikGrip™ fasteners.



Roofing Ventilation & Accessories

800.800.8590 / [MarcoIndustries.com](http://MarcoIndustries.com)



Marco's Rapid Response™ delivers, faster and easier. Take advantage of free shipping with low minimum orders.



# X-SEAL

EXPANDABLE FOAM TAPE



**Automatically expands to fill any-shaped gap in the construction of metal buildings, doors and windows, concrete, wood and more.** X-Seal™ comes compressed at just one-quarter inch, on an easy-to handle roll. Cut the desired length of X-Seal, place X-Seal into the gap opening—even one with irregular hips and valleys—and remove the protective release paper. Now watch X-Seal slowly expand to completely fill and seal the gap.

X-Seal won't dry out and become hard or brittle. And it's highly resistant to bugs and vermin.

It's UV stable and maintains a seal during thermal expansion and contraction of building panels. It has excellent compressibility and recovery (for minimal compression set). It's a very good thermal and sound insulator. And there's no shrinkage or blow-out from closedcell breakage with X-Seal.

X-Seal holds the exterior out and the interior in, yet allows vapors to move through. A hermetic seal allows the absorption of moisture and when conditions permit, the slow release of moisture through evaporation.

- Expands from 1/4" to 1"
- Expands from 3/8" to 1 1/2"
- Follows, flexes, expands, compresses to fit
- UV stable
- Universally adaptable to most roof panels, including hips and valleys
- Highly resistant to bugs and vermin
- Economical
- Maintains seal in heat and cold
- Will not leech out or stain



Roofing Ventilation & Accessories

## The Marco Weather-Tite™ System

Closure

Ventilation

Fasteners

Flashing

Sealants

Underlayment

Accessories

- Value drives everything we do. That's why we developed the Marco Weather-Tite System—a comprehensive line of products that offers easy installation, remarkable building ventilation, lower utility costs, extreme durability, and outstanding warranties. Get more quality, more performance and more value ... from Marco.



Before expansion.



Expanded.

**X-Seal's versatility makes it perfect for sealing gaps in so many construction projects, between similar and dissimilar materials:**

- Joints and seams in metal construction
- Around doors and windows
- For control joints, expansion joints and isolation joints in concrete construction
- Civil and underground construction (highway and airport runways)
- Log and prefabricated homes
- Panel joints in precast panel construction

### Specs

**Color:** Base foam is black, other colors available

**Density:** 10 lbs./cu Ft. (150kg/m3)

**Flammability:** UL 94 HF1, Self-extinguishing, DIN 4102, B1 compression at 50%, B2 compressed

**Temperature Stability Range:** -40° F to 212° F

**Manufacturer's Lab:** -40° C to 120° C

**Weather Resistancy:** Excellent

**Compression Set:** Maximum 2%

**Tensile Strength:** 21.8 psi

**Thermal Conductivity:** 12,106 BTU (hr.) (ft2) (\*F/ft)



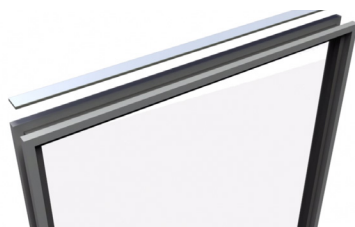
**SEAL**

### You May Also Need

- Roof Boots™ / Weather-Tite Metal Roof Sealant

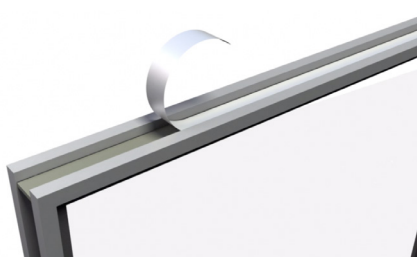
### Easy Install

See our installation instructions online at [MarcoIndustries.com](http://MarcoIndustries.com). Mastix requires no tools for installation. It comes in an easy-to-handle roll and the adhesive is quickly exposed with a simple peel-back.



#### Step 1:

Cut the desired length of X-Seal



#### Step 2:

Place X-Seal into the gap opening—even one with irregular hips and valleys—and remove the protective release paper.



#### Step 3:

X-Seal slowly expand up to 1" to completely fill and seal the gap.



Roofing Ventilation & Accessories

800.800.8590 / [MarcoIndustries.com](http://MarcoIndustries.com)



Marco's Rapid Response™ delivers, faster and easier. Take advantage of free shipping with low minimum orders.

# UNDERLAYMENT



# HYDRASHELL MAX

SYNTHETIC ROOF UNDERLAYMENT



**The high performance underlayment choice with a 30 year limited warranty.**

When you need a high strength light weight synthetic roof underlayment, HydraShell™ MAX is the choice for you.

Manufactured from 100% synthetic materials, HydraShell™ MAX has a four layer construction making it 25 times stronger than #15 felt and 12 times stronger than #30 felt. It requires significantly few fasteners, and provides a tough, durable deck cover.

The less weight per roll and the non-woven walking surface makes for a simple and easy installation.

HydraShell™ MAX is designed for use under all types of roofing materials; including: asphalt shingles, synthetic shingles, cedar shakes, and metal, and is backed by a 30 year limited warranty.

- Won't wrinkle or absorb water
- Stays flexible in cold weather
- 25 times stronger than #15 felt
- 12 times stronger than #30 felt
- More coverage per roll
- Less weight per roll
- Requires fewer fasteners
- Cool Gray surface to reduce heat build-up
- 90-day UV exposure rating
- Class A fire rating
- Use under asphalt shingles, synthetic shingles, cedar shakes, and metal
- Made in the USA

**30  
YEAR**  
LIMITED WARRANTY



**HYDRASHELL  
MAX**



Roofing Ventilation & Accessories



## The Marco Weather-Tite™ System

Closure  
Ventilation  
Fasteners  
Flashing  
Sealants  
Underlayment  
Accessories

- Value drives everything we do. That's why we developed the Marco Weather-Tite System — a comprehensive line of products that offers easy installation, remarkable building ventilation, lower utility costs, extreme durability, and outstanding warranties. Get more quality, more performance and more value ... from Marco.



## Specs

Roll Dimensions: 40"/300'  
Permeability: 0.1 perms  
Water Transmission: Pass  
Tear Strength: 33 lbs MD/24 lbs CD  
Tensile Strength: 95 lbs MD/85 lbs CD  
Burst Strength: 160 psi  
Elongation: 20%  
Weight Per Square: 1.96 lbs  
Nominal Thickness: 6.2 mils  
Temp. Range (Internal): -70° F to 240° F



## You May Also Need

- Roof Boots™ / Weather-Tite Metal Roof Sealant

## Easy Install

See our installation instructions online at [MarcoIndustries.com](http://MarcoIndustries.com). HydraShell MAX is lighter than felt so its easier to handle. It offers more coverage per roll, and is pre-printed with a nailing pattern for easier installation.



### Step 1:

Lay out horizontally on the eave, printed side up, with 3" horizontal laps and 6" vertical laps.



### Step 2 :

Fasten with 1" diameter plastic cap roofing nails or cap staples according to the pre-printed nail pattern.



Roofing Ventilation & Accessories

800.800.8590 / [MarcoIndustries.com](http://MarcoIndustries.com)



Marco's Rapid Response™ delivers, faster and easier. Take advantage of free shipping with low minimum orders.

# HYDRASHELL SUPREME

HIGH-PERFORMANCE SYNTHETIC ROOF UNDERLAYMENT



**The superior synthetic underlayment choice with a limited lifetime warranty.**

HydraShell™ SUPREME is a 100% premium synthetic underlayment that is easy to install, light weight, and offers a low slip bottom coating. The unique four layer construction makes it 20 times stronger than #30 felt. Each 10 square roll weighs less than 26lbs. and is attached with standard roof nails making the installation simple, less expensive, and fast.

HydraShell™ SUPREME has a non-woven walking surface and specially formulated low slip bottom side coating offering a safer installation process.

HydraShell™ SUPREME is designed for use on steeper slopes under all types of roofing materials; including: asphalt shingles, synthetic shingles, cedar shakes, and metal, and is backed by a limited lifetime warranty.

- Superior lay-flat properties: won't wrinkle or absorb water
- Stays flexible in cold weather
- 20 times stronger than #30 felt
- Less weight per roll
- Low-slip bottom coating
- Cool Gray surface to reduce heat build-up
- 90-day UV exposure rating
- Class A fire rating
- Use on steeper slopes under asphalt shingles, synthetic shingles, cedar shakes, and metal
- Made in the USA

**LIFETIME**  
LIMITED WARRANTY

 **HYDRASHELL**  
SUPREME



Roofing Ventilation & Accessories

## The Marco Weather-Tite™ System

Closure  
Ventilation  
Fasteners  
Flashing  
Sealants  
Underlayment  
Accessories

- Value drives everything we do. That's why we developed the Marco Weather-Tite System — a comprehensive line of products that offers easy installation, remarkable building ventilation, lower utility costs, extreme durability, and outstanding warranties. Get more quality, more performance and more value ... from Marco.



## Specs

Roll Dimensions: 40"/300'  
Permeability (ASTM E96): 0.1 perms  
Water Transmission (ASTM D4869): Pass  
Tear Strength (ASTM D4533): 38 lbs MD/37 lbs CD  
Tensile Strength (ASTM D751): 120 lbs MD/115 lbs CD  
Burst Strength (ASTM D751): 160 psi  
Elongation (ASTM D751): 20%  
Weight Per Square (ASTM D5261): 2.46 lbs  
Nominal Thickness (ASTM D1777): 7.5 mils  
Temp. Range (Internal): -70° F to 240° F



## You May Also Need

- Roof Boots™ / Weather-Tite Metal Roof Sealant

## Easy Install

See our installation instructions online at [MarcoIndustries.com](http://MarcoIndustries.com). HydraShell Supreme is lighter than felt, so it's easier to handle. It comes 10 squares to a roll, offering more coverage per roll, and is pre-printed with a nailing pattern for easier installation.



### Step 1:

Lay out horizontally on the eave, printed side up, with 3" horizontal laps and 6" vertical laps.



### Step 2 :

Fasten with 1" diameter plastic cap roofing nails or cap staples according to the pre-printed nail pattern.



Roofing Ventilation & Accessories

800.800.8590 / [MarcoIndustries.com](http://MarcoIndustries.com)



Marco's Rapid Response™ delivers, faster and easier. Take advantage of free shipping with low minimum orders.

# HYDRASHELL PREMIUM

SUPERIOR SYNTHETIC ROOF UNDERLAYMENT



**HydraShell Premium underlayment is among the safest, strongest, and best-performing underlayments on the market.** Woven of heavyweight polymer fabric, HydraShell™ Premium offers superior strength and durability, dynamic steep-slope traction, water resistance, a wrinkle-free surface, and resistance to UV-breakdown. The textured Fiber Claw™ woven fabric surface offers dynamic traction and is ideal for steep slopes in a variety of weather conditions.

HydraShell™ Premium is rated for commercial and residential applications using plastic caps and roofing nails (3/8" head), and is an ideal roof underlayment for asphalt shingles, metal, tile, slate, and a

variety of other sloped roofing materials.

- **Safer:** Skid-resistant polymer coating and proprietary Fiber Claw™ walking surface offers dynamic steep slope traction.
- **Stronger:** HydraShell™ Premium is stronger than Type 15 or 30 felt and easier to handle during installation.
- **Lighter:** HydraShell™ Premium is up to four times lighter than competitive products, making it easier to handle during all installation stages.
- **Simpler to apply:** HydraShell™ Premium installs quickly, easily and with less risk. It's lighter, stronger and covers more area.
- **Won't buckle, warp, or crack:** Superi-

or lay-flat properties and water resistance keeps HydraShell™ Premium from warping, wrinkling, and cracking in cold weather.

- **Warranty:** Lifetime limited warranty applies to HydraShell™ Premium. Contact Marco for more details.



Roofing Ventilation & Accessories

- Value drives everything we do. That's why we developed the Marco Weather-Tite System—a comprehensive line of products that offers easy installation, remarkable building ventilation, lower utility costs, extreme durability, and outstanding warranties. Get more quality, more performance and more value...from Marco.

PROPERTY	STANDARD	UOM
Thermal Stability	ASTM D 882	MD 41/CD 37
Tear Resistance	ASTM D 4533	MD 41/CD 37
Rupture Resistance	ASTM D 3462-02 (LBF)	87
Beach Puncture	ICC AC-08	Pass
Long Term Sag	ICC AC-08	Pass
Liquid Water Transmission	ASTM D 4869-02	Pass
Ultra Violet Aging	ICC-ES AC 188	Pass
Accerlerated Aging	ICC-ES AC 188	Pass

## Specs

Roll Size: 48" X 250' (1.22m X 76.20m)

ASTM D 226, Type 1 & 2: Standard Specification for Asphalt-Saturated Organic Felt Used in Roofing and Waterproofing

CSA A123.3 Type I & II: Asphalt Saturated Organic Roofing Felt

ASTM E 108 – Class A: Standard Test Methods for Fire Tests of Roof Coverings

CSA A 220.1: Acceptance Criteria for Concrete Roof Tile



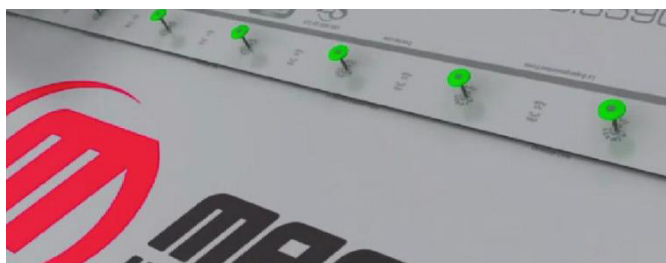
## Easy Install

See our installation instructions online at [MarcoIndustries.com](http://MarcoIndustries.com). HydraShell Premium is lighter than felt so its easier to handle. It offers more coverage per roll, and is pre-printed with a nailing pattern for easier installation.



### Step 1:

Lay out horizontally on the eave, printed side up, with 3" hoizontal laps and 6" vertical laps.



### Step 2:

Fasten with 1" diameter plastic cap roofing nails or cap staples according to the pre-printed nail pattern.



Roofing Ventilation & Accessories

800.800.8590 / [MarcoIndustries.com](http://MarcoIndustries.com)



Marco's Rapid Response™ delivers, faster and easier. Take advantage of free shipping with low minimum orders.



# HYDRASHELL SUPREME SA

HT SELF-ADHERING SYNTHETIC ROOF UNDERLAYMENT



**The best choice in high-temp, easy-to-handle, self-adhering applications.** As Marco's superior underlayment, this peel and stick, self-adhering solution provides superior leak protection. HydraShell Supreme SA helps to protect a building's deck or internal structure against leaks caused by ice and water damming and wind-driven rain.

HydraShell Supreme SA is a peel and stick, self-adhering solution that provides superior leak protection for standard roofing areas plus valleys, ridges, coping joints, chimneys, vents, formers,

skylights and low-slope sections. Exceptionally durable and pliable, HydraShell Supreme SA adheres to a wide variety of substrates. The split-back release film peels off easily to simplify installation, while a cool-gray surface to reduce heat build-up and a 90-day UV exposure rating for extended installation periods eases the process as well.

- Split-back release film peels offer easy installation
- Adheres to a variety of substrates
- Polymer-modified asphalt gives excellent pliability
- Exceptionally durable high-tensile/tear strengths
- Cool Gray surface to reduce heat build-up
- 90-day UV exposure rating
- 30-year limited warranty
- Made in the USA

**30**  
**YEAR**  
LIMITED WARRANTY

HYDRASHELL  
SUPREME SA



Roofing Ventilation & Accessories

## The Marco Weather-Tite™ System

Closure  
Ventilation  
Fasteners  
Flashing  
Sealants  
Underlayment  
Accessories

- Value drives everything we do. That's why we developed the Marco Weather-Tite System — a comprehensive line of products that offers easy installation, remarkable building ventilation, lower utility costs, extreme durability, and outstanding warranties. Get more quality, more performance and more value ... from Marco.



### Specs

Roll Dimensions: 36"/67'  
Roll Weight: 55 lbs  
Area Per Carton: 201 ft<sup>2</sup>  
Cartons Per Pallet: 30  
Permeability (ASTM E96): .067 perms  
Nail Sealability (D1970): Pass  
Adhesion To Plywood @ 75° F (D903): >12 lbs/ft  
Adhesion To Plywood @ 40° F (D903): >2 lbs/ft  
Mill Thickness (ASTM D5147): 44  
Flexibility At -20° F (D1970): Pass  
High Temperature Rating: 240° F



### You May Also Need

- Roof Boots™ / Weather-Tite Metal Roof Sealant

## Easy Install

See our installation instructions online at [MarcoIndustries.com](http://MarcoIndustries.com). HydraShell Supreme SA features a split-back release film that peels off for easy installation. The clean, easy-to-handle, self-adhering application makes installation quick and efficient.



### Step 1:

Tack/secure the end of the roll with a nail. Unroll the membrane 3–6 feet.



### Step 2 :

Carefully remove the upper release liner, align the membrane and continue to peel the release liner from the membrane. Stop frequently to press the membrane in place with heavy hand or roller pressure.



### Step 3 :

When finished with the desired length, repeat the process at the starting point by removing the remaining poly release film and pressing the membrane in place with heavy hand or roller pressure. Side laps (horizontal laps) must be a minimum of 3 inches and end laps a minimum of 6 inches.



Roofing Ventilation & Accessories

800.800.8590 / [MarcoIndustries.com](http://MarcoIndustries.com)



Marco's Rapid Response™ delivers, faster and easier. Take advantage of free shipping with low minimum orders.

# HYDRASHELL PREMIUM SA

SUPERIOR SELF-ADHERING SYNTHETIC ROOF UNDERLAYMENT



**HydraShell™ Premium Self-Adhering (SA) Product, with its high-performance adhesive and trusted manufacturing technology, is a premium grade underlayment.** It is one of the strongest, most reliable and best-performing self-adhered roof underlayments on the market.

This product is unrivaled in its ease of application, requires no back nailing in the field of the roof, does not require priming at low temperatures and remains stable at extreme temperatures.

It meets or exceeds code requirements and industry nail sealability tests, and offers the most walkable surface in the industry with its proprietary Fiber Claw™ woven fabric surface. The HydraShell™ Premium SA is rated for commercial and residential applications and is an ideal

self-adhering underlayment for projects subject to ice-damming and severe weather.

- **Versatile:** HydraShell™ Premium SA meets code requirements for initial tack at 0° F and has a high adhesive melt point at 280° F, making it the most versatile choice for a wide range of products.
- **Next-Generation:** HydraShell™ Premium SA has the widest functional temperature range of any self-adhered underlayment, creating a continuous water-shedding surface without nailing.
- **Lighter:** HydraShell™ Premium SA is up to four times lighter than competitive products, making it easier to handle during all installation stages.
- **Stronger:** HydraShell™ Premium SA is stronger than competitive products,

will not delaminate and is resistant to tearing and stretching.

- **Better Coverage:** Comes in a 48" net 2 sq roll, saving labor costs and improving coverage.
- **Reliable:** Proprietary Fiber Claw™ walking surface offers dynamic steep slope traction.
- **Warranty:** Lifetime limited warranty applies to HydraShell™ Premium SA. Contact Marco for more details.



**LIFE  
TIME**  
LIMITED WARRANTY



Roofing Ventilation & Accessories

## The Marco Weather-Tite™ System

Closure  
Ventilation  
Fasteners  
Flashing  
Sealants  
Underlayment  
Accessories

- Value drives everything we do. That's why we developed the Marco Weather-Tite System— a comprehensive line of products that offers easy installation, remarkable building ventilation, lower utility costs, extreme durability, and outstanding warranties. Get more quality, more performance and more value...from Marco.

COMPETITIVE INFORMATION	HYDRASHEL PREMIUM SA	OTHER PEEL & STICK UNDERLAYMENT
Thermal Stability	Best	Average
Min. Application Temperature	Lowest	Average
Walking Surface	Excellent	Poor to Average
Weight Per Two-Square Roll	20 lbs	50-70 lbs
Roll Width	48"	36' - 40'
UV-Exposure Rating	180 Days	30 - 90 Days on Average
Back Nailing Required	No	Yes
Necessary to Prime in Colder Weather	No	Yes

## Specs

Product Width Internal: 48 inches Maximum UV Exposure Interval: 180 Days  
Basis Weight: ASTM D 5261, 100 lbs/MSF  
Mil Thickness: ASTM D 1970, 22 mils, 0.001")  
Adhesion to Plywood: ASTM D 1970, 6.8 lbf/inch  
Adhesion Melt Point: ASTM E 28, 280 degrees fahrenheit  
Flexibility Temperature: ASTM D 1970, -20 degrees fahrenheit  
Nail Sealability: ASTM D 1970, Pass  
CSA A220.1: Acceptance criteria for Roof Underlayment for use in severe climate areas  
CSA A220.1: Installation of concrete roof tile



## Easy Install

See our installation instructions online at [MarcoIndustries.com](http://MarcoIndustries.com). HydraShell Premium SA features a split-back release film that peels off for easy installation. The clean, easy-to-handle, self-adhering application makes installation quick and efficient.



### Step 1:

Tack/secure the end of the roll with a nail. Unroll the membrane 3-6 feet.



### Step 2:

Carefully remove the upper release liner, align the membrane and continue to peel the release liner from the membrane. Stop frequently to press the membrane in place with heavy hand or roller pressure.



### Step 3:

When finished with the desired length, repeat the process at the starting point by removing the remaining poly release film and pressing the membrane in place with heavy hand or roller pressure. Side laps (horizontal laps) must be a minimum of 3 inches and end laps a minimum of 6 inches.



Roofing Ventilation & Accessories

800.800.8590 / [MarcoIndustries.com](http://MarcoIndustries.com)



Marco's Rapid Response™ delivers, faster and easier. Take advantage of free shipping with low minimum orders.

# ACCESSORIES



**MARCO**  
**INDUSTRIES™**

Roofing Ventilation & Accessories





- Eliminate tear-off
- Easy to install
- No more warped wood furring
- Cost comparable to wood, increases profitability
- Will not decay, corrode, or crease metal
- One box of RE2 is equivalent to 40 furring strips

One element of the Marco WEATHER-TITE™ SYSTEM

### Polyethylene Foam Spacer System

Use RE2™ instead of wood spacers to solve common re-roofing problems. RE2 acts as a spacer between the old shingles and the new metal roof, providing air flow and ventilation.

Revolutionary RE2 is manufactured with high density polyethylene foam. Lightweight, strong and won't decay or corrode the metal roof installed over it. RE2 will not warp, which causes the metal to crease.

RE2 is sold in two 150-foot, easy-to-handle rolls. Simply roll it across the old shingled roof, tack it down (with the 50 nails included), and install the metal roof on top.

The initial cost of RE2 is comparable to using wood spacers. It is easy to handle and install and also increases installation efficiency. Does not require heavy tools.

RE2 doesn't warp like wood, resulting in fewer customer callbacks.

# Retro Fit

Remove the re-roofing danger, expense and hassle of wood furring with RE2™



Made with  
Recycled Material





FOAM CLOSURES

SEALANTS

VENTILATION

FLASHING

DOORS

FASTENERS

UNDERLAYMENT

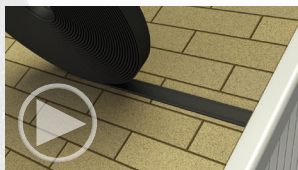


# Marco Weather-Tite® System Advantage

With Marco's Rapid Response™ get more of what you need faster and easier. Take advantage of free shipping with low minimum orders. Marco - we're big on customer service and small on hassle. Build it smart. Buy it smarter.

## SPECS & EASY INSTALL

See our installation animations online at [MarcoIndustries.com](http://MarcoIndustries.com)



Unroll across existing shingle roof



Tack with staple gun or nails, install metal roof on top



You will need these products also:

**METAL ROOF**  
Sealant

**X SEAL**  
Expandable foam tape

PROPERTY	STANDARD	VALUE
Compressive Strength - Vertical direction (psi)	ASTM D3575-00	3.8
Compression Set (%)	ASTM D3575-00	< 30
Tensile Strength (psi)	ASTM D3575-00, suffix T (md / cmd)	58, 30
Elongation	ASTM D3575-00, suffix T (md / cmd)	86, 60
Tear Resistance (lb/in)	ASTM D3575-00, suffix G (md / cmd)	11, 17
Density Range (lb/ft³)	ASTM D3575-00	1.5-1.9
Water Absorption (lb/ft³)	ASTM D3575-00, suffix L	< 0.1
Thermal Stability	ASTM D3575-00, suffix S	< 5%
Contact Corrosivity (Alum. Plate)	Method 3005 FED STD. 101	None
Static Decay (anti-static grade)	EIA STD. 541 Appendix F	< 2 sec.
Surface Resistivity (anti-static grade)	EIA STD. 541, section 4.3	1.0 x 10 <sup>9</sup> – 1.0 x 10 <sup>12</sup>
Thermal Conductivity k-value (BTU-IN / HR-FT²-°F)	ASTM C518-91	0.35-0.42
Thermal Resistance R – Value (HR-FT²-°F / BTU)	ASTM C518-91	1.30-1.60

RE2™ represents yet another Marco Industries development in bringing you innovative, higher quality, and more economical products for the building industry.



One box of RE2 is equivalent to 40 furring strips

[MarcoIndustries.com](http://MarcoIndustries.com)

1.800.800.8590

