

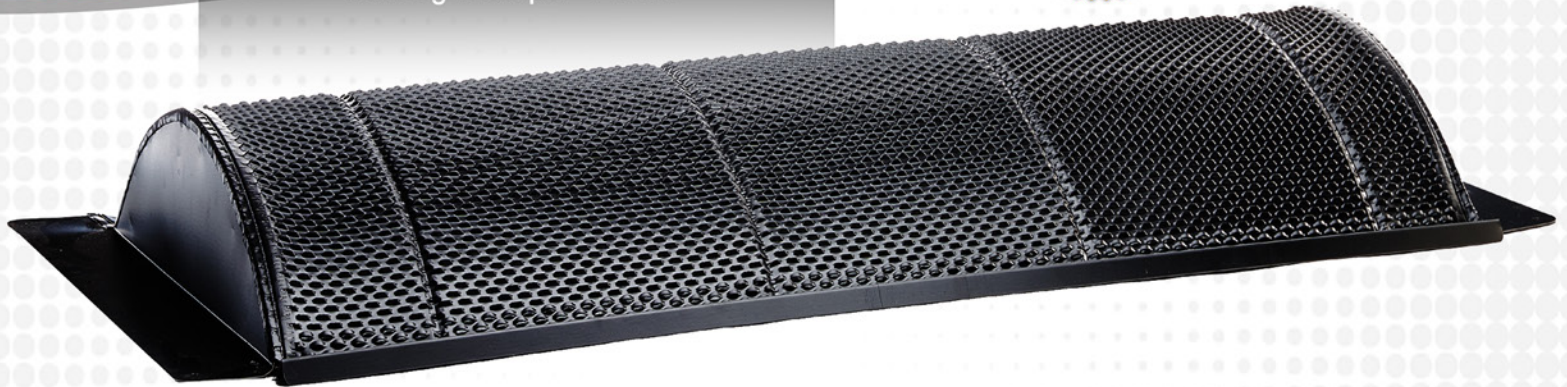


Roofing Ventilation & Accessories

# Shingle Off-Ridge Vent

## BUILT TO LAST

Eliminating water infiltration while providing 100 square inch Net Free Venting Area per 4' unit.



## Features:

- ▶ Zero water entry at 110 MPH wind-driven rain.
- ▶ No additional external baffle is needed in the front of vent, saving time and money.
- ▶ Reduces air conditioning maintenance and utility costs.
- ▶ High Quality & Durability - Reduces customer call-backs.
- ▶ Suitable for any roof pitch from 3/12 to 12/12.
- ▶ Keeps insects and critters out.

**EXPAND YOUR ROOFING SYSTEM PERFORMANCE**  
**PREVENT LEAKS • PROTECT PROPERTY • ASSURE VENTILATION**

# INSTALLATION INSTRUCTIONS

## VALUE DRIVES EVERYTHING WE DO

Value drives everything we do. That's why we developed a comprehensive line of ventilation products that offer easy installation, remarkable building ventilation, lower utility costs, extended roof deck life, extreme durability, and outstanding warranties. Get more quality, more performance, and more value...from Marco Industries.™

## EASY INSTALL

See our installation online at [marcoindustries.com](http://marcoindustries.com)

1. Space vent openings evenly across ridge. The opening size should be a minimum of a 2½" by 46" cut between two sets of rafters. Note: Do not cut into rafters.
2. If shingle have previously been installed on the roof, remove the shingles around sides and top of opening to provide space to install vent as per instructions.
3. Shingle courses should be installed close to deck opening so that the front flange of the vent completely covers unexposed section of shingle.
4. Position the vent to cover the last course of shingles, leaving the proper exposed section of shingle at the side flanges of vent. Center vent over the opening of the deck. Apply approved sealant under front flange of vent.
5. Fasten side and top flanges securely with minimum 1¼" standard roofing nails. Space nails approximately 4" on the center and approximately 1½" from outer edge of flange.
6. Secure the bottom flange with provided wood screws. Space screws evenly no more than 18" apart. A 4 ft. vent will require a minimum of 2 screws.
7. Apply roof cement on side and top flanges. Completely cover flanges 2" beyond flange onto underlayment with ¼" thick bed of plastic roof cement.
8. Cut shingles to fit so flanges are completely covered. Press shingles into place to ensure they are bonded to the cement. Fasten shingles with nails per shingle manufacturer's instructions.



### SPECS:

**Dimensions:** Width 23 1/2" - x Height 3 1/4"

**Material:** 26 - gauge galvalume

**Codes & Standards:** FL Building Code

**Roof Pitch:** Conforms to any pitch from 3/12" to 12/12"

**Color:** Black, Weatherwood, Galvalume

**Patents:** Pending

**Nominal Lengths:** 4'

**Screws:** 1 3/4" Wood Type for Bottom Flange (not included)

**Vent Hood:** Mini louvers in lower portion of hood block water.

**Interior Louver Panel:** Mini louvers in opposite direction to louvers on lower portion of hood as second water barrier

**Internal Baffle:** Placed at the top of the vent pan, the internal baffle is the third line of defense against water intrusion.



1-800-800-8590 / [Marcoindustries.com](http://Marcoindustries.com)

 **MARCO**  
**INDUSTRIES**  
Roofing Ventilation & Accessories